



Philippe Freyssinet

PRESIDENT'S MESSAGE

Dear colleagues,

I take the opportunity of **EXPLORE's** second issue in 2002 to address you all about AEG's mission on a few topics

which I believe are essential to the life of our association. I am thinking of diffusion of information about our activities and AEG's rapid evolution towards environmental geochemistry.

Communication

Thanks to Steve Amor's efforts, our web site is coming along nicely with information already available on-line about the activities of AEG members from Australia, Scandinavia and even China. It is important that our web site brings us diversity from our activities worldwide and becomes a scientific and technical discussion portal for all geochemists. I strongly believe that we ought to make our respective domestic information available on-line, as well as those reference documents that are so useful to the whole of our profession. I am thinking, for example, about the excellent report by Linda Bloom "Writing Geochemical Reports, Second Edition". Making such documents available to the entire geochemical community is an excellent means of enhancing our Association's image. I look forward to the completion in the near future of an updated digital geochemical bibliography on our web site. Other documents, such as sampling protocols, sample preparation procedures, performance of new analytical devices, new data processing techniques, etc., would also be extremely valuable. Please do not hesitate to contact Steve Amor or myself and let us know your proposals on this issue.

Workshops on Exploration Geochemistry

Although we won't be holding a symposium in 2002, our Association is actively represented at major conferences where it will offer a number of workshops. At the PDAC Convention in Toronto, Graham Closs, Linda Bloom and Mary Doherty presented a workshop entitled "Improving the odds: Effective exploration geochemistry".

At the Global Exploration 2002 Conference in Denver, which will be held in April this year, Graham Closs, Mary Doherty and Ken Witherly will run a workshop entitled "Discovery Through Innovation – Putting Technology to Work in Mineral Exploration". The content of these workshops is a remarkable illustration of the evolution of the methods available in geochemical exploration and AEG members are the main presenters. No doubt these workshops will be extremely well received.

Environment

A significant number of our members are now actively involved in the field of environmental geochemistry and environmental management at large. It seems to me that AEG can play a key role on a number of issues, as our knowledge in exploration and mineralisation geochemistry can contribute significantly to the management of several current environmental issues. I can think of a number of examples, of which I will quote a couple, where contribution from exploration geochemists could prove highly valuable, mainly thanks to their thorough understanding of such notions as "geochemical backgrounds" and the characteristics of mineralisations:

- Europe is currently defining new directives on water management (European Water Directive). These directives require that new tools be used to monitor ground water quality throughout Europe. Besides contamination by mankind, the influence of the geochemical background on ground water quality can also be significant. For instance, high levels of As, Se and U in a number of aquifers, which are probably improper for human consumption, are solely due to geological factors.
- The European Commission has just released a text that sets the framework of a future environmental directive on soil management and protection. Once again, the definition of geochemical background is important, particularly when it comes to defining the

continued on page 3



EXPLORE NEWSLETTER
wishes to thank our
Corporate Sponsors



TABLE OF CONTENTS

President's Message 1

Integrated Data Management 2

Technical Note:

 Using the Correct Control Limits 3

Calendar of Events 5

New USGS Web-Based Newsletter 6

Laboratory Updates 7

Recent Papers 11

New Members 15

21st IEGS - Dublin 16

AEG Membership Application 17

Correction 18

List of Advertisers 18

AEG Committees 19

Be the first to see this complete solution at work...

Geosoft and Metech will be holding a session on "Integrated Data Management - Oasis montaj and acQuire" in Denver during the SEG (April 14 - 16, 2002). In response to the growing interest in this presentation, we will run the same session on two separate days (April 15 and April 16). Who should attend?

- Geologists, Geochemists, and Geophysicists looking for a complete solution for working with all types of exploration data from collecting to reporting.
- Geoscientists looking to improve their exploration opportunities through better data management, quality control, analysis, integration and presentation.
- Exploration managers looking for a cost saving end-to-end solution from one provider enabling an easy exchange of data and results.
- Investment managers who wish to understand technologies available to provide better QA/QC for investment decisions

The presentation will include the following topics:

- Work flow from 'Start' to 'Finish': acQuire and Oasis montaj - Vertical Integration.
- Field Data Capture: The new Pocket acQuire.
- Data Management and Synchronization Concepts.
- Quality Control and Quality Assurance.

Continued on Page 3

Manage

acquire

QA/QC

Process and analyze

Integrate

Create meaningful results

Explore your data

Integrated data solutions
acQuire • Chimera • Wholeplot
www.geosoft.com

GEOSOFT

LithoChemSM

Answer your core **questions.**

+ lithological identification
 + vectoring to mineralisation
 + stratigraphic correlations
 + alteration
 + protolith

Solutions from Actlabs' **LithoChemSM**

actlabs.com

Actlabs

Be the first to see...

----- continued from Page 2

- V. acquire: Link and relationship to Oasis montaj.
- VI. Data Visualization and Map Production.

This session is complimentary but please note that seats are limited. To reserve a seat, please email info@geosoft or visit www.geosoft.com for more details.

Where: Holiday Inn Denver International Airport, Beaver Creek Room, located in the same hotel as the SEG conference

When: Monday, April 15 from 3:30pm to 4:30pm and on Tuesday, April 16 from 2:00pm to 3:00pm.



President's Message

----- continued from Page 1

objectives of polluted site cleaning strategies or procedures for amending agricultural soils with sewage sludges or similar wastes, where only a handful of experts are qualified enough to handle information of this nature.

- In the mining field, a European directive is under review that deals with management of mine waste. Who better than an exploration geochemist could possibly best identify the long-term geochemical behaviour of tailings or treatment residues and predict their impact on surface and ground waters?

These few examples suffice to illustrate the environmental and scientific problems in which AEG can play an important role not only through its members, but also as an association that compiles and diffuses information on these topics. Our scientific journal GEOCHEMISTRY Exploration, Environment, Analysis (GEEA) is already addressing these topics and can play an important role in the scientific debates about these environmental issues. In doing so, GEEA represents a major asset for attracting new members given the number of research teams now working on these subjects worldwide.

AEG represents an efficient think tank for dealing with scientific and technical geochemical problems in the field of exploration and environment, mainly around mine sites.

Philippe Freyssinet

BRGM

Environment & Process Division

BP6009, F-45060 Orléans, France

Tel : 33-238.64.3005

Fax : 33-238.64.3680

Email : p.freyssinet@brgm.fr



Technical Note

Using the Correct Control Limits

Lynda Bloom¹, Maureen Leaver²

¹Analytical Solutions Ltd., 1214-3266 Yonge Street, Toronto, ON Canada M4N 2L6 (www.explorationgeochem.com)

²CCRMP, Canadian Certified Reference Materials Project, Natural Resources Canada, 555 Booth Street Ottawa, ON K1A 0G1

It is essential that regular submissions of standards and blanks be submitted to a laboratory to ensure that suitable data quality is being provided. Certified reference materials (CRM's) are generally sold with information stating an expected range of values for contained elements as determined by the manufacturer of the CRM.

The statistics usually supplied by the manufacturer are a measure of the homogenization of the CRM and agreement between the laboratories that participated in the round robin that was undertaken to determine the accepted values. These statistics cannot be applied to measure a laboratory's data quality. An understanding of the statistics underlying the expected range of values for the CRM is crucial.

Gold standard MA-1b, produced by the Canadian Certified Reference Materials Project, a division of Natural Resources Canada, is used to demonstrate this point. The Certificate of Analysis for MA-1b reads as follows:

REFERENCE GOLD ORE MA-1b

Recommended Value \pm 95% Confidence Interval
Au 17.0 μ g/g \pm 0.3 μ g/g

This is the label on the purchased bottles and many purchasers assume that 95 out of 100 times a laboratory's results for MA-1b should therefore fall within

16.7 to 17.3 μ g/g Au.

However, it is stipulated in the literature that accompanies the bottle, "the uncertainty estimates the expected range of reproducibility of this mean within 95% probability were the measurement program to be repeated many times." In fact, the 95% confidence limit quoted denotes that if the certification program were to be conducted 100 times, the *overall mean* in 95 cases would be expected to fall within the prescribed limits. The certification program for MA-1b, which is similar to that used by most CRM manufacturers, included 175 acceptable analytical determinations produced by 28 laboratories.

When the typical user inserts standards into sample batches, there is only *one* determination by the laboratory

continued on page 4

Using the Correct Control Limits...

----- continued from Page 3

and the 95% confidence limit quoted is not applicable for measuring the acceptability of this single reported value. Realistically, the range of values produced by having a single determination will be far greater than the 95% confidence limit quoted.

Along with the MA-1b documentation is an additional table of statistics that is reproduced below.

Distribution of results by method

Method	No. of Sets	No. of Results	($\mu\text{g/g}$)				
			Mean	CI	S_{Lc}	S_{rc}	CV,%
FA/G	20	113	16.96	0.30	0.61	0.37	1.93
FA/AAS	8	44	17.26	0.85	0.99	0.42	2.30
INAA	3	20	17.21	1.85	0.66	0.65	3.88
FA/INAA	1	4	16.23			0.36	2.25
FA/ICP	1	5	17.36			0.29	1.66
Overall	33	186	17.05	0.26	0.70	0.42	2.22

S_{Lc} is the between-set standard deviation and S_{rc} is the within-set standard deviation. The bottles of MA-1b are labelled with the overall mean, 17.0 and the 95% Confidence Limit, 0.30 $\mu\text{g/g}$.

The more meaningful statistics for explorationists, when a single determination by a single laboratory is being evaluated, are the *overall* between- and within-set standard deviations. The within-set standard deviation is a reflection of the homogeneity of the material in the bottle received by the participating laboratory in combination with that laboratory's ability to reproduce the analytical method routinely. The between-set standard deviation is likely the most useful statistic, in addition to the factors described for the within-set standard deviation; it also takes into account slight biases between laboratories, the differences between the sub-samples received by the laboratories.

The mean \pm two standard deviations approximates the expected range of values for 95% of the cases. Using S_{Lc} , the between-set standard deviation, of 0.70 $\mu\text{g/g}$ and the calculated mean value of 17.0 $\mu\text{g/g}$, the results for MA-1b are expected to fall within 15.6 to 18.4 $\mu\text{g/g}$ Au. Based on the 95% Confidence Limit as indicated on the label of the bottle, the range of results for MA-1b are 16.7 to 17.3 $\mu\text{g/g}$ Au which is a considerably narrower range of acceptable values.

This is a complicated subject and using S_{Lc} , the between-set standard deviation, to estimate the allowable range of values is only a first approximation.

The International Standards Organization has several committees that have been working on these questions for 25 years. The titles of ISO Guides 30 to 35 are listed in the references for readers who are interested in researching the issue further (or visit www.iso.ch). There

are several statistical approaches documented that evaluate the acceptance of single and replicate assays, which seem to involve rather sophisticated equations (as shown below) and each requiring different sets of conditions to be met.

$$|X_C - X_L| \leq 2\sqrt{\sigma_{Lm}^2 + \sigma_{Rm}^2}$$

Further details on the evaluation of results for certified reference materials are described in a condensed version of ISO Guide 33 available from the Canadian Certified Reference Materials Project at CANMET, Ottawa, Canada, ccrmp@nrcan.gc.ca or (613) 943-0573.

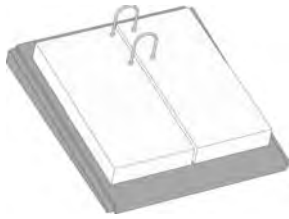
This discussion points out that a wider range of values, than those generally provided by suppliers of certified reference materials, are acceptable values. Although suppliers provide suitable data to verify that their materials are well homogenized and that the acceptable value is an accurate

representation of the content, these values should not be used to determine which assays should be rejected for a quality control program.

References

- ISO Guide 30, Terms and definitions used in connection with reference materials
- ISO Guide 31, Contents of certificates of reference materials
- ISO Guide 32, Calibration in analytical chemistry and use of certified reference materials
- ISO Guide 33, Uses of certified reference materials
- ISO Guide 34, Quality system guidelines for the production of reference materials
- ISO Guide 35, Certification of reference materials—General and statistical principles
- Steger, H.F., 1998. Uses of matrix reference materials. For presentation at the IUPAC/ISO/REMCO workshop on Reference Materials, Berlin, April 22-23, 1999 and the workshop of the conference of the Canadian Mineral Analysts, Kirkland Lake, ON, September 17, 2001, and for publication in the respective workshop proceedings. Project: MMSL No. 600637CCRMP DIVISION REPORT MMSL 98-024 (OP&J)
- Verma, S.P., 1997. Sixteen statistical tests for outlier detection and rejection in evaluation of international geochemical reference materials: example of Microgabbro PM-S. Geostandards Newsletter, Vol.21, No.1, pp. 59-75.





CALENDAR OF EVENTS

International, national, and regional meetings of interest to colleagues working in exploration, environmental and other areas of applied geochemistry.

■ May 7-8, 2002, **GSA Rocky Mountain Section Meeting**, Cedar City, Utah. Information: Robert L. Eves, (435) 586-1934. Abstracts deadline: February 4, 2002.

■ May 13-15, 2002, **GSA Cordilleran Section Meeting**, Corvallis, Oregon. Information: Bob Yeats (541) 737-1226. Abstracts deadline: February 7, 2002.

■ May 15-17, 2002, **4th International Conference on Advances in Fluid Mechanics**, Ghent, Belgium, by the Wessex Institute of Technology, UK and University of Ghent, Belgium. (Conference Secretariat, AFM 2002, EMail: shobbs@wessex.ac.uk Web: <http://www.wessex.ac.uk/conferences/2002/afm02>)

■ May 27-29, 2002, **47th Joint Annual Meeting of the GAC and MAC Of Canada**, University of Saskatchewan, Saskatoon, Saskatchewan, CANADA, by the Geological Association of Canada and the Mineralogical Association of Canada. (Mel Stauffer, Department of Geological Sciences, University of Saskatchewan, 114 Science Place, Saskatoon, SK, Canada. S7N 5E2, Phone: 306-966-5708 FAX: 306-966-8593 EMail: mel.stauffer@usask.ca Web: <http://www.usask.ca/geology>)

June 6-19, 2002, **Modern Management of Mine producing, Geology and Environmental protection, International Conference SGEM 2002**, Varna City, BULGARIA. Information: SGEM, +359 2 975 3117, Email: office@stef92.com.

■ June, 8-14, 2002, **AMERICAN SOCIETY for SURFACE MINING and RECLAMATION (ASSMR) 18th National Meeting**, Lexington, KY. http://www.ca.uky.edu/assmr/Upcoming_Events.htm

■ June 15-20, 2002, **Mineral Surface Reactivity: EuroConference on Models of Mineral Surface Reactivity**, Castelvecchio Pascoli, Italy. Information: European Science Foundation, EURESCO Office, 1 quai Lezay-Marnésia, 67080 Strasbourg Cedex, France.

■ July 14-August 2, 2002, **9th International Platinum Symposium and Field Conference**, Bozeman, Montana. Organizers: IGCP (International Geological Correlation Programme) 427, Society for Geology Applied to Mineral Deposits. Information: Roger Cooper, (409) 880-8239, fax 409-880-8246.

■ July 21-25, 2002, **9th International Platinum Symposium**, Holiday Inn - Grand Montana, Billings, MT, USA, by the IGCP427/SEG/SGA. (Roger Cooper, Dept. of Geology, Lamar University, P.O. Box 10031, Beaumont, TX 77710, Phone: 409-880-8239 EMail: cooperrw@hal.lamar.edu Web: <http://www.platinumsymposium.org>)

■ July 22-27, 2002, **The Earth System and Metallogeneses: A Focus on Africa**, Windhoek, Namibia, by The Geological Society of Namibia, The Geological Society of South Africa, and The Geological Society of Zambia. (The Secretary, IAGOD/GEOCONGRESS 2002, P.O. Box 44283, Linden 2104, South Africa, EMail: gssa@pop.onwe.co.za Web: <http://www.gssa.org.za>)

■ Aug 31-Sep 04, 2002, **Emerging Concepts in Organic Petrology and Geochemistry**, The Banff Centre, Banff, Alberta, Canada, by the Canadian Society for Coal Science and Organic Petrology (CSCOP) & The Society for Organic Petrology (TSOP). (Dr. Martin Fowler, Geological Survey of Canada, 3303-33rd St. NW, Calgary, Alberta T2L 2A7 Canada, Phone: 403-292-7038 FAX: 403-292-7159 EMail: Mfowler@nrcan.gc.ca Web: <http://www.cscop-tsop2002.com>)

■ September 1-4, 2002, **AusIMM 2002 - 150 Years of Mining**, Auckland, New Zealand. Technical and poster sessions on Geoscience, Mining, Metallurgy, Environment and General topics. Field trips to geothermal systems, and epithermal and orogenic lode gold deposits. Details and registration form available on website <http://www.ausimm.co.nz> EMail: conference2002@ausimm.co.nz

■ October 27-30, 2002, **Annual Meeting of the Geological Society of America**, Denver, Colorado. INFORMATION: TEL 1-800-472-1988, meetings@geosociety.org.

■ November 20-23, **Role of Natural Resources and Environment for Sustainable Development in South and Southeast Asia (NESDA)**, Dhaka, Bangladesh. Information: Afia Akhtar, Geological Survey of Bangladesh, 153 Pioneer Road, Segunbagicha, Dhaka 1000, Bangladesh, 880-2-418545.

■ December 14-19, **Geochemistry of Crustal Fluids: The Role and Fate of Trace Elements in Crustal Fluids**, Seefeld in Tirol, Austria. Information: European Science Foundation, EURESCO Office, 1 quai Lezay-Marnésia, 67080 Strasbourg Cedex, France.

■ February 24-26, 2003, **Society for Mining, Metallurgy, and Exploration (SME) annual meeting**, Cincinnati, OH. INFORMATION: SME (sme@smenet.org). SME, Meetings Dept., P.O. Box 277002, Littleton, CO 80127, 800-763-3132. SME (sme@smenet.org)

■ May 12-16, 2003, **GeofluidsIV: Fourth international conference on fluid evolution, migration and interaction in sedimentary basins and orogenic belts**, Utrecht University, Utrecht, The Netherlands, by the Netherlands



Calendar of Events

continued from Page 5

Institute of Applied Geoscience TNO-National Geological Survey. (Ms. J.M. Verweij, PO Box 80015, 3508 TA Utrecht, The Netherlands, Phone: +31 30 256 4600 FAX: +31 30 256 46 05 EMail: j.verweij@nitg.tno.nl Web: <http://www.nitg.tno.nl>)

■ June 1-7, 2003, **AMERICAN SOCIETY for SURFACE MINING and RECLAMATION (ASSMR) 19th National Meeting and Billings Land Reclamation**, Billings, Montana. INFORMATION: Dennis Newman, dneuman@montana.edu, http://www.ca.uky.edu/assmr/Upcoming_Events.htm

■ July 12-18, 2003, **6th International Conference on Acid Rock Drainage (ICARD)**, Cairns, Australia; INFORMATION: Clive Bell, c.bell@mailbox.uq.edu.au or website http://www.ausimm.com.au/events/event_writeups/icard.asp

■ October 5-10, 2003, **The XII International Mineral Processing Congress**, Cape Town, South Africa. Information: www.impc2003.org.za.

■ November 2-5, 2003, **Annual Meeting of the Geological Society of America**, Seattle, Washington. INFORMATION: TEL 1-800-472-1988, meetings@geosociety.org.

■ Oct 10-15, 2004, **SEG International Exposition & 74th Annual Meeting**, Denver, Colorado, US, by the SEG. (Debbi Hyer, 8801 S. Yale, Tulsa OK 74137, Phone: (918) 497-5500 EMail: dhyer@seg.org Web: <http://meeting.seg.org>)

Please check this calendar before scheduling a meeting to avoid overlap problems. Let this column know of your events.

Virginia T. McLemore

*New Mexico Bureau of Mines and Mineral Resources
New Mexico Institute of Mining and Technology
801 Leroy Place*

Socorro, NM 87801 USA

TEL: 505-835-5521

FAX: 505-835-6333

e-mail: ginger@gis.nmt.edu



A rock solid reputation for absolute accuracy

Since 1982, Becquerel Laboratories has been meeting the analytical requirements of clients in the geological and mineral exploration sector.

Our company is a world leader in Neutron Activation Analysis (NAA). An ultra-sensitive technique, NAA is an ideal quality control procedure to complement and verify results from other analytical techniques. It provides cost-effective, timely analysis and one simple method can analyze over 30 separate elements.

For absolute accuracy, trust the analytical expertise of Becquerel Laboratories.

For more information call 1-877-726-3080 or visit www.becquerellabs.com



*ISO 17025
For Scope of Accreditation No. 422
Pour la portée d'accréditation no. 422

Becquerel
LABORATORIES

6790 Kitimat Road, Unit 4
Mississauga, Ontario
Canada L5N 5L9

*Accredited to ISO 17025 by the Standards Council of Canada as a testing laboratory for specific tests.

absolute accuracy

New USGS Web-Based Newsletter

In March 2002, the U.S. Geological Survey Mineral Resources Program began a web-based newsletter providing information on current USGS minerals-related science activities. The newsletter highlights current activities, upcoming events, accomplishments, and recent publications.

The first issue of the newsletter contains articles on national maps and datasets for research and land management, mineral resources spatial data available on the Web, the latest developments with mineral resource databases, a summary of the recently completed Colorado Front Range Infrastructure Resources project, and an update on international work in northeast Asia.

While not limited to geochemistry, the newsletter provides information on the wide spectrum of the activities of the USGS Mineral Resources Program. The newsletter is available on the web only at the following URL: <http://minerals.usgs.gov/news/>

Robert G. Eppinger

U.S. Geological Survey

P.O. Box 25046, MS 973, Denver, CO 80225, USA

Email: eppinger@usgs.gov

Telephone: 303-236-2468

FAX: 303-236-3200





Laboratory Updates

ACTLABS

Actlabs have developed a number of new products for mineral exploration. The SGH (soil gas hydrocarbon) technique became commercially available in March of 2001 after the period of CAMIRO confidentiality expired on Project 97E01. This cutting edge research was supported by eight major exploration companies (BHP, Inco, Noranda, Outokumpu, WMC, Rio Algom, Cameco and Cominco). Ten case studies were carried out in areas which did not respond to conventional geochemistry. The new technique provided significant definitive heavy hydrocarbon anomalies in most cases. With this technique B soil horizon samples are collected and sent to Actlabs for analysis. Over 170 hydrocarbon compounds in the C5-C17 range are analyzed by GC-MS and GC-MS-MS to a detection limit in the low ppt range. The technique has been found to be very robust to surface organics and environmental degradation. A new two year CAMIRO project, designed to provide better understanding of the processes underlying this technology, was funded in 2001 by Anglo American, BHP-Billiton, Codelco, Outokumpu, Noranda, Barrick, Newmont, WMC, MIM and the provinces of Manitoba, Ontario and Alberta.

Several advances in selective extraction technology which bring 3D mapping into the realm of reality have also been introduced. These include an enhanced version of Enzyme Leach which allows the subsurface mapping of deep geological structures and features. It appears that the Enhanced Enzyme Leach will respond to targets at depths greater than any other selective extraction. The Terrasol Leach and a PGE/Terrasol version were developed specifically for platinum group metal and gold exploration and have proved to be particularly useful for mapping intermediate and shallow depth deposits and geological features. When these selective extractions are combined a uniquely powerful tool is available for 3D mapping. To round out these capabilities the Na-pyrophosphate leach on organic rich materials allows filling in the gaps in surveys where inorganic soils are not available.

It has become apparent that interpretation of selective extraction data is more complicated than originally thought and interpretative services have been added to improve the odds of success in exploration programs using these methods.

Dr. Colin Dunn and Actlabs have developed a biogeochemical tree-top sampling survey technique using helicopters. A newly introduced analytical packages for 60+ elements, including PGE enables the analysis of vegetation ash and raw vegetation from such surveys at

detection levels and for elements previously not used in exploration biogeochemistry.

Our aqua regia Ultratrace 1 (ICP/MS) and Ultratrace 2 (ICP/MS and ICP) packages allow the exploration geochemist to extend the usefulness of conventional geochemistry to see more subtle geological features. "Near total" Au+48 (INAA and 4-acid ICP) package has been augmented with ICP/MS to produce two new packages Au+53 and Ultratrace 3. Pioneering development with lithium metaborate/lithium tetraborate/lithium carbonate fusions combined with ICP and ICP/MS have allowed us to bring low cost lithogeochemistry into the realm of everyday use and allowed the geologist to make routine use of chondrite normalized REE and spider diagrams. Our hydrogeochemistry packages, which combine ICP, ICP/MS, and ion chromatography, provide the widest suite of elements to the lowest detection limits available. These packages have become widely used for both exploration and base line environmental surveys. Our Pb fire assay ICP/MS package virtually eliminates Pd and Pt blanks and allows a routine detection limit of 0.1 ppb for both Pt and Pd. This technique has been extensively used for lake bottom sediment surveys by the Ontario Geological Survey. We are nearing the completion of a research project which links the capillary electrophoresis technique to ICP/MS for metal speciation determination. The results to date are encouraging. Keep tuned for the environmental and exploration possibilities. Our addition of a geochronologist has allowed us to provide services for all age dating techniques including the popular Ar40/Ar39, K/Ar, U-Pb, Rb-Sr, Sm-Nd and fission track methods. Isotope ratios for C, S, SO₄, O, N, Pb, Nd, Sr, and D/H are also available.

Our commitment to quality is paramount and Activation Laboratories Ltd achieved accreditation to ISO 17025 for specific registered tests and to the mineral analysis standard, Can-P-1579. We are one of only two

continued on page 8

THE USE OF KINEMATIC STRUCTURAL GEOLOGY

in determining

THE STATE OF STRESS-STRAIN IN ROCKS

August 12-16, 2002 CSM, Golden, Colorado



Applications in: Mineral exploration-mining, Rocky Mountain tectonics, fluid migration (oil/water)

A field-based training course addressing the technology and practical uses of brittle-ductile strain analysis in rocks.

For further information and a complete brochure:

Office of Special Programs & Continuing Education, Colorado

School of Mines, Golden, Colorado 80401

T: 303-273-3321 F: 303-273-3314

space@mines.edu • www.mines.edu/Outreach/Cont_Ed



Laboratory Updates...

continued from Page 7

commercial laboratories to have achieved this ultimate status worldwide. Finally Activation Laboratories made use of all these techniques to provide complete chemical analyses of the Tagish Lake meteorite, the most primitive carbonaceous meteorite ever found. These data, which will assist in future chondrite normalization, was published in the journal *Science*, Volume 290, p320-325.



ALS CHEMEX

It is an exciting time at ALS Chemex. The company has charted an aggressive growth curve over the last two years, culminating in our recent acquisition of the venerable Bondar Clegg group of laboratories. We now stand as a true global provider of analytical chemistry and assays to the mining and exploration industries. Our objective is to continue to integrate new technology with attentive personal service.

Modern exploration geochemistry places a premium on technological innovation, but some assay methods still require the touch of an artist. Perhaps the fire assay methods best exhibit this blend of art and science. The classical lead collection fire assay is still best practice for gold, silver, platinum, and palladium, but success depends heavily on the skills and experience of the assayer. The resurgence of exploration for platinum group elements, particularly in North America, has highlighted the need for careful attention to the details of the fire assay process. As it is good food for thought, a very brief review of the procedure follows.

A nominal 30-grams of sample is mixed with a flux that is rich in litharge (lead oxide) to facilitate destruction of the rock forming matrix and collection of the precious metals during fusion. A silver inquant is added to alloy with the precious metals. The flux ingredients and sample to flux ratio may be adjusted based on sample matrix. For

instance, samples that are high in chromite may require additional borax or an increase in the ratio of flux to sample to achieve a good fusion and optimum recovery of precious metals. The tendency of magnesium to emulsify the lead and increase the viscosity of the slag requires a similar remedy, increased borax and/or increased ratio of flux to sample. Samples containing very high sulfide or copper/nickel may also require extra care. Additional litharge (PbO) usually overcomes the problem and ensures full recovery of precious metals, but potassium nitrate (niter) may also be added to increase the oxidizing strength of the flux. The properly fluxed samples are fused in a reducing furnace at approximately 1,000 degrees Celsius. The molten lead collects the precious metals and sinks to the bottom of the crucible.

Once the molten mixture is poured into molds and a lead button is collected and separated from the slag, the precious metals are isolated from the sample matrix and the next step is cupellation. During cupellation the lead button is heated in an oxidizing furnace at approximately 900 degrees Celsius. The lead oxide sinks into the cupel leaving a precious metal bead on the surface. The analyst dissolves the dore bead in aqua regia and follows with an analytical finish by ICP-AES or ICP-MS.

It is here that technology has been brought to bear on a procedure that is hundreds, if not thousands, of years old. If the objective is only gold or silver, the dore bead can be weighed and the result reported gravimetrically. However, spectroscopic instrumentation can report all the elements in solution with good accuracy and precision because most of the potential interferents have been removed with the slag. The ICP-AES is efficient and accurate as an endpoint. Mineralized samples are likely to be reported with an ICP-AES finish. However, the sensitivity required for some exploration work requires that the ICP-MS be used because of its ability to measure precious metals at low ppb levels. The advent of mass spectrometer technology has enabled us to provide reporting limits of less than 1 ppb for Pt and Pd with some special care. This may be useful for the explorer who seeks to measure depletion of PGE's in some rocks. Further, we can easily read Au to 1 ppb following a fire assay without the need for an organic extraction as with AAS, thereby greatly simplifying the process.

We can see the influence of the ICP-MS elsewhere in ALS Chemex. For instance, the ultratrace multielement packages continue to be popular options because of the wide range of elements reported and excellent sensitivity. Until recently, it wasn't practical to include low-level bismuth, rhenium, selenium, tellurium, or thallium in multielement packages because the ICP-AES simply could not measure these elements at or near background levels. The ICP-MS expands the arsenal of elements and improves the quality of low-level geochemistry for the explorer.

The ICP-MS is also the workhorse instrument for selective and partial leach analyses. At ALS Chemex, we

continued on Page 9

Shea Clark Smith

MEG

**MINERALS EXPLORATION &
ENVIRONMENTAL GEOCHEMISTRY**

Plant • Soil • Gas • Rock

P.O. Box 18325, Reno, Nevada 89511
2235 Lakeshore Drive, Carson City, Nevada 89704
Tel: (775) 849-2235 • Fax: (775) 849-2335
SheaClarkSmith@compuserve.com



Laboratory Updates...

continued from Page 8

offer a range of partial leach packages, and we stand ready to modify most of these as needed based on the sample matrix. Under license from Wamtech Pty Ltd., we provide the entire family of MMI leaches, which are optimized to extract loosely bound metals in the soil. Different MMI packages are available for base or precious metals, as well as kimberlites. Regoleach is a unique partial leach developed by ALS Chemex and Rutherford Mineral Resource Consultants of Australia. Regoleach reports 33 elements by ICP-MS after leaching 50 to 100 grams of sample. It is designed to effectively dissolve Au, base metals, and pathfinder elements. ALS Chemex offers the complete range of non-proprietary weak leaches, including variants of hydroxylamine hydrochloride and sodium pyrophosphate. Hydroxylamine hydrochloride can be formulated to attack manganese and/or some of the iron oxides and the elements scavenged by those phases. Sodium pyrophosphate is designed to selectively extract the elements that are bound to organic components in the sample; it is best applied to humus. We also have experience with water, EDTA, and ammonium acetate leaches.

This combination of customized attention to details and adaptation of new technology for exploration geochemistry is evident in many aspects of our business. However, the key ingredient to successful analytical geochemistry remains the people. The combination of Bondar Clegg and ALS Chemex has resulted in an unparalleled team of experienced assayers, chemists, analysts, and professionals, so please feel free to tap into that resource by contacting your nearest ALS Chemex lab for more information!



SGS ANALABS

SGS's geochemical services expanded dramatically in late 2001 with the acquisition of Analabs Pty Ltd. A new entity SGS Analabs is being created by merging existing SGS geochemical laboratories such as XRAL with those of Analabs. Integration of this extensive global network of minesite and geochemical operations is expected to be completed by mid 2002.

The enlarged group provides a full range of services with a strong emphasis on quality. From classical methods, to a variety of methods for precious metals and a range of instrumental techniques such as INAA, XRF, ICP-OES and ICP-MS, we can cover almost any requirement in a geochemical exploration program.

The use of axial ICP-OES methods in Toronto has improved detection limits for a number of elements that

continued on Page 10

Your Global Partner in Mining and Mineral Exploration

New Offices

Now offering sample preparation and sample export services to North America and Australia from four new locations:

- Mwanza, Tanzania
- Tehran, Iran
- Izmir, Turkey
- Ojebyn, Sweden

Services

Servicing all your sample preparation and assay requirements:

- Gold and PGE's
- Base Metals
- Nickel Laterites
- Industrial and Bulk Minerals

For full details contact your nearest ALS Chemex Laboratory or visit www.alschemex.com



ALS Chemex



Laboratory Updates...

continued from Page 9

can be problematic by ICP-MS. The determination of low level Fe in waters is an example. A new Hg analyzer using flow injection methods allows rapid determination of Hg at a 1ppb detection limit. A new Elan 6100 has allowed expansion of ICP-MS methods and improved sensitivity for many elements.

The MMI methods for deep penetrating geochemistry continue to see strong growth as their effectiveness has been proven in areas of deep cover such as much of the Canadian Shield for both precious and base metal targets. The MMI D for detecting buried kimberlitic bodies has developed into a useful tool for the diamond explorationist looking to prioritize geophysical targets for drilling.



BECQUEREL LABS

Instrumental neutron activation analysis (INAA) continues to be viewed as a highly reliable analytical technique for research, primary exploration and ore-body evaluation. With an increasing focus on quality in recent years we have experienced a major increase in use of INAA as part of integrated quality control systems. We now see it widely used as an independent check on analyses carried out by other techniques. This has been particularly important for gold analyses but the application has now expanded to a range of other elements, some of which can cause analytical problems in conventional techniques as they approach ore-grade levels e.g. Ag, U, W, Ta.

The focus on quality has also turned the spotlight on the reliability of reference materials. There can be no doubt that some of these are more homogeneous than others. Figure 1 compares 30 gram replicate INAA gold analyses of a clearly inhomogeneous international standard and an Australian reference material with similar gold content. It is probably best that the international

standard remains anonymous (it is now defunct) but it does make the point that it is essential that the user should have some feel for the degree of homogeneity of reference materials when using them to monitor laboratory error.

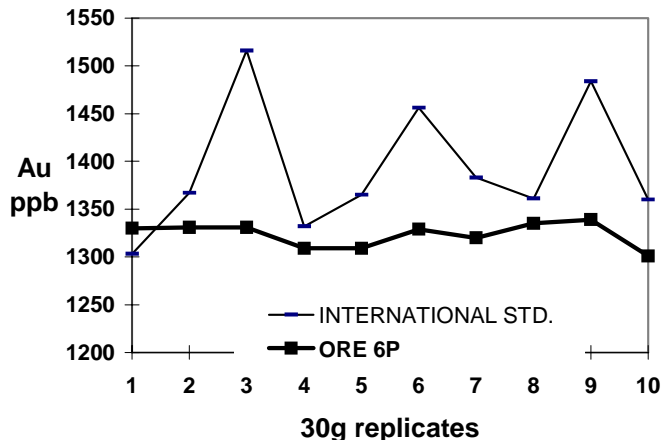


Figure 1. Replicate INAA gold analyses on 30 gram splits of an inhomogeneous international standard and a considerably more homogeneous reference material, ORE 6P.

How can this homogeneity be assessed? The most severe test is to take much smaller replicate samples than would be used in a normal analytical sample. If reproducibility is still reasonable then there can be increased confidence that the sample will behave well when used for routine quality control. Figure 2 shows results of INAA determination of gold on 0.2 gram and 1.0 gram replicates of a potential gold standard. In this case the results show that even though the replicates were either 250 or 50 times smaller than a normal 50 gram fire assay sample they still exhibit good reproducibility and are therefore fit for the purpose for which they were prepared. Such analyses are particularly well suited to INAA since there is good sensitivity for gold, the analysis is total and there is no danger of contamination from laboratory chemicals. Analytical stability can be readily assessed from the range of other elements determined at the same time.

continued on Page 11

ROCKLABS
REFERENCE MATERIALS
FOR GOLD ASSAYING QA/QC

Quality Reference Materials affordable for use on an every batch basis. Wide range of values.

Available in sachets for geologists or 2.5 kg jars for laboratories.

Used in over 30 countries.

Check Certificates and range at www.rocklabs.com

ROCKLABS LTD 161 NELSON STREET, P.O BOX 18-142
AUCKLAND, NEW ZEALAND
Telephone: 64 9 634 7686
Fax: 64 9 634 6886
E-mail: rocklabs@clear.net.nz

Jeffrey A. Jaacks Ph.D.
Geochemistry

8493 East Foxhill Place
Englewood, CO 80112
USA

(303) 713 - 1601
j.jaacks@worldnet.att.net



Laboratory Updates...

continued from Page 10

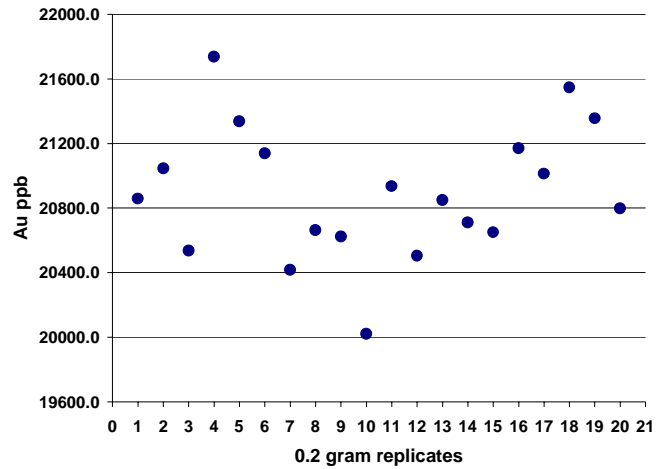
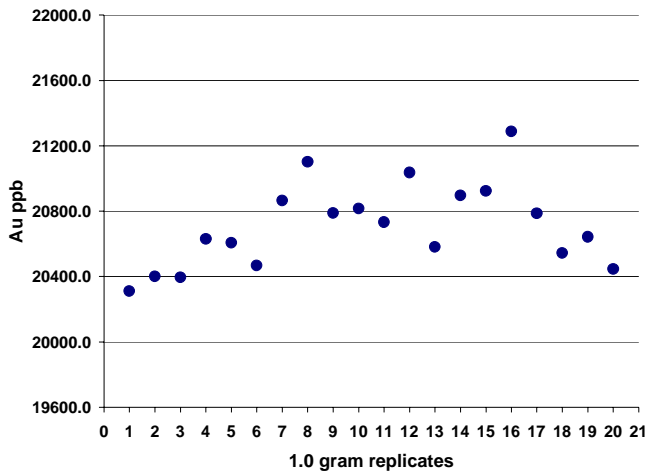


Figure 2. Replicate Au analyses of an ORE custom standard by INAA, using 0.2 gram and 1.0 gram sample weights in order to assess homogeneity.

There is a dangerous and unfortunate tendency to assume that all reference materials are homogeneous. They are not.

Our thanks to Paul Hamlyn, of Ore Research and Exploration, Melbourne, Australia who prepared the ORE samples and agreed to release of the analyses.

David Garnett and
Helen Waldron (naa@bq.com.au).

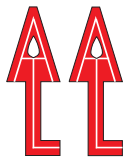


RECENT PAPERS

This list comprises titles that have appeared in major publications since the compilation in **EXPLORE** Number 114. Journals routinely covered and abbreviations used are as follows: Economic Geology (EG); Geochimica et Cosmochimica Acta (GCA); the USGS Circular (USGS Cir); and Open File Report (USGS OFR); Geological Survey of Canada papers (GSC paper) and Open File Report (GSC OFR); Bulletin of the Canadian Institute of Mining and Metallurgy (CIM Bull.); Transactions of Institute of Mining and Metallurgy, Section B: Applied Earth Sciences (Trans. IMM). Publications less frequently cited are identified in full. Compiled by L. Graham Closs, Department of Geology and Geological Engineering, Colorado School of Mines, Golden, CO 80401-1887,


continued on Page 10

ASSAYS AND GEOCHEMICAL ANALYSES



ACME

ANALYTICAL
LABORATORIES
LTD.



Vancouver
1996

ICP Mass Spec Analysis **CDN \$16.50 US \$12.35**
(Aqua regia digest on 1 gm sample)

37 Elements including:

Au
0.2
ppb

Ag
2
ppb

As
0.1
ppm

Bi
0.02
ppm

Cd
0.01
ppm

Co
0.1
ppm

Cu
0.01
ppm

Hg
5
ppb

Ga
0.1
ppm

Mo
0.02
ppm

Ni
0.1
ppm

Pb
0.01
ppm

S
0.02
%

Sb
0.02
ppm

Sc
0.1
ppm

Se
0.1
ppm

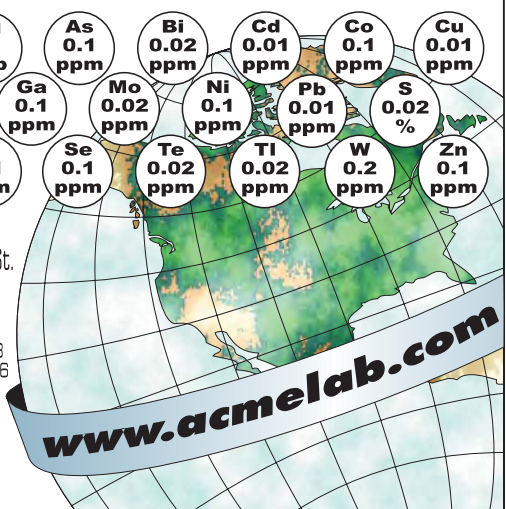
Te
0.02
ppm

Tl
0.02
ppm

W
0.2
ppm

Zn
0.1
ppm

852 East Hastings St.
Vancouver • BC
Canada • V6A 1R6
Tel: 1-604-253-3158
Fax: 1-604-253-1716
Toll Free:
1-800-990-2263



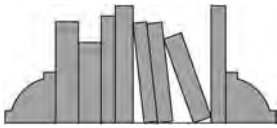
www.acmelab.com

MEXICO

GM LACME Laboratories SA de CV
Leonardo@acmelab.com

SOUTH AMERICA

ACME Analytical Laboratories (Chile) Ltda.
service@acmelabs.cl



RECENT PAPERS

continued from Page 11

Chairman AEG Bibliography Committee. Please send new references to Dr. Closs, not to **EXPLORE**.

Alpers, C.N., Jambor, J.L., and Nordstrom, D.K. (eds.), 2002. Sulfate Minerals: Crystallography, Geochemistry, and Environmental Significance. *Rev. in Mineralogy and Geochem.* V. 40. 608 p.

Amirbahman, A., Reid, A.L., Haines, T.A., Kahl, J.S. and Arnold, C., 2002. Association of methylmercury with dissolved humic acids. *Environmental Science and Technology.* 36: 690-695.

Anderson, B.R., Gemmell, J.B., and Berry, R.F., 2001. The Geology of the Nifty Copper Deposit, Throssell Group, Western Australia: Implications for Ore Genesis. *EG* 96(7): 1535-1565.

Barrie, C.T., Erendi, A., and Cathles, L., III, 2001. Paleosea-Floor Volcanic-Associated Massive Sulfide Mineralization Related to a Cooling Komatiite Flow, Abitibi Subprovince, Canada. *EG* 96(7): 1605-1700.

Best, M.G. and Christiansen, E.H., 2001. *Igneous Petrology.* Blackwell Science. 458 p.

Bierlein, F.P., Arne, D.C., Keay, S.M., and McNaughton, N.J., 2001. Timing relationships between felsic magmatism and mineralisation in the central Victorian gold province, southeast Australia. *Aust. J. Earth Sci.* 48(6): 883-899.

Bostick, B.C., Hansel, C.M., LaForce, M.J. and Fendorf, S., 2001. Seasonal fluctuation in zinc speciation within a contaminated wetland. *Environmental Science and Technology.* 35: 3823-3829.

Buerge-Weirich, D., Hari, R., Xue, H., Behra, P. and Sigg, L., 2002. Adsorption of Cu, Cd and Ni on goethite in the presence of natural groundwater ligands. *Environmental Science and Technology.* 36: 328-336.

Cail, T.L. and Cline, J.S., 2001. Alteration Associated with Gold Deposition at the Getchell Carlin-Type Gold Deposit, North-Central Nevada. *EG* 96(6): 1343-1359.

Carranza, E.J.M. and Hale, M., 2001. Geologically constrained fuzzy mapping of gold mineral potential, Baguio District, Philippines. *Natural Resources* 10(2): 125-136.

Chiaradia, M. and Fontbote, L., 2001. Radiogenic Lead Signatures in Au-Rich Volcanic-Hosted Massive Sulfide Ores and Associated Volcanic Rocks of the Early Tertiary Macuchi Island Arc (Western Cordillera of Ecuador). *EG* 96(6): 1361-1378.

Craig, J.R., Vaughan, D.J., and Skinner, B.J., 2001. *Resources of the Earth: Origin, Use, and Environmental Impact 3rd Ed.*, Prentice Hall. 520 p.

Davis, A. and Atkins, d., 2001. Metal distribution in the Clark Fork River sediments. *Environmental Science and Technolgy.* 35: 3501-3506.

Dissanayake, C.B., Chandrajith, R., and Tobschall, H.J., 2000. The geology, mineralogy, and rare element geochemistry of the gem deposits of Sri Lanka. *Bull. Geol. Soc. Finland.* 72(1/2): 5-57.

Dominy, S.C., 2001. Evaluation of gold grade potential in erratic gold veins using a bulk-rock geochemical discrimination index. *Trans IMM.* B110 -

Frost, B.R., Barnes, C.G., Collins, W.J., Arculus, R.J., Ellis, D.J., and Frost, C.D., 2001. A geochemical classification for granitic rocks. *J. Petrol.* 42(11): 2033

continued on Page 13

BQ BECQUEREL
AUSTRALIA

Neutron Activation Analysis

*Gold + multielement suite
Independent check analyses*

Lucas Heights Science and Technology Centre
New Illawarra Rd., Lucas Heights, NSW 2234, Australia
Tel: (02) 9543 2644 Fax: (02) 9543 2655
e-mail: naa@bq.com.au
Contact: David Garnett / Helen Waldron

International

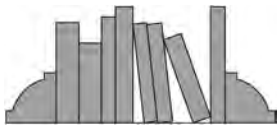


Geochemical
Consultants

Mary E. Doherty
Principal

- ❖ GEOCHEMICAL EXPLORATION
- ❖ SURVEY DESIGN, IMPLEMENTATION
- ❖ MULTI-DIMENSION DATA INTERPRETATION
- ❖ ARCVIEW PROJECT INTEGRATION
- ❖ SELECTIVE EXTRACTION APPLICATION
- ❖ INDICATOR MINERAL CHEMISTRY
- ❖ TRAINING SEMINARS

International Geochemical Consultants, L.L.C.
5763 Secrest Court Golden, Colorado 80403 U.S.A.
Phone: 1-303-278-6876 Fax: 1-303-215-0641
MaryEDoherty@earthlink.net

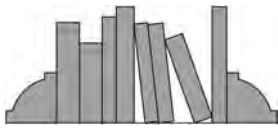


RECENT PAPERS

continued from Page 12

- Ganguli, P.M., Mason, R.P., Abu-Saba, K.E., Anderson, R.S., and Flegal, A.R., 2000. Mercury speciation in drainage from the New Idria mercury mine, California. *Environmental Science and Technology*. 34: 4773-4779.
- Gregoire, M., Bell, D.R., and LeRoex, A.P., 2002. Trace element geochemistry of phlogopite-rich mafic mantle xenoliths: their classification and their relationship to phlogopite-bearing peridotites and kimberlites revisited. *Contrib. Min. Petrol.* 1425 603-625.
- Harris, J.R., Wilkinson, L., Heather, K., Fumerton, S., Bernier, M.A., Ayer, J., and Dahn, R., 2001. Application of GIS processing techniques for producing mineral prospectivity maps – a case study: mesothermal Au in the Swayze greenstone belt, Ontario, Canada. *Natural Resources Research*. 10(2): 91-124.
- Hattori, K.H. and Keith, J.D., 2001. Contribution of mafic melt to porphyry copper mineralization: evidence from Mount Pinatubo, Philippines and Bingham Canyon, Utah, USA. *Min. Deposita*. 36(8): 799-806.
- Hoernle, K., Tilton, G., LeBas, M.J., Duggen, S., and Garbe-Schonberg, D., 2002. Geochemistry of oceanic carbonatites compared with continental carbonates: mantle recycling of oceanic crustal carbonate. *Contrib. Min. Petrol.* 142(5): 520-542.
- Hren, M.T., Chamberlain, C.P., and Magilligan, F.J., 2001. A combines flood surface and geochemical analysis of metal fluxes in a historically mined region: A case study from the New World Mining district, Montana. *Environ. Geol.* 40(11/12): 1334.
- John, D.A., 2001. Miocene and Early Pliocene Epithermal Gold-Silver Deposits in the Northern Great Basin, Western United States: Characteristics, Distribution, and Relationship to Magmatism. *EG* 96(8): 1827-1853.
- Jones, B., Renaut, R.W., and Rosen, M.R., 2001. Biogenicity of gold- and silver-bearing siliceous sinters forming Hot (75°C) anaerobic spring-waters of Champagne Pool, Waiotapu, North Island, New Zealand. *J. Geol. Soc.* 158(6): 895 –
- Kay, J.T., Conklin, M.H., Fuller, C.C., and O'Day, P.A., 2001. Processes of nickel and cobalt uptake by manganese oxide forming sediment in Pinal Creek, Globe mining district, Arizona. *Environmental Science and Technology*. 35: 4719-4725.
- Killeen, P., 2002. Trends and Developments in 2001 (Exploration). *Can. Min. J.* Feb/Mar.: 9-14.
- Kneebone, P.E., O'Day, P.A., Jones, N. and Herring, J.G., 2002. Deposition and fate of arsenic in iron- and arsenic-enriched reservoir sediments. *Environmental Science and Technology*. 36: 381-386.
- Kyser, K. (ed.), 2000. Fluids and Basin Evolution. *Min. Assoc. Can. Short Course V.* 28. 262 p.
- Large, R.R., Bull, S.W., and Winefield, P.R., 2001. Carbon and Oxygen Isotope Halo in Carbonates Related to the McArthur River (HYC) Zn-Pb-Ag Deposit, North Australia: Implications for Sedimentation, Ore Genesis, and Mineral Exploration. *EG* 96(7): 1567-1593.
- Leach, D.L., Bradley, D., Lewchuk, M.T., Symons, D.T.A., de Marsily, G., and Brannon, J., 2001. Mississippi Valley-type lead-zinc deposits through geological time: implications from recent age-dating research. *Min. Deposita*. 36(8): 711-740.
- Leahy, K., 2001. Post-eruptive processes in kimberlites: implications for diamond exploration. *Trans IMM.* B-1-B23.
- Leybourne, M.I., 2001. Mineralogy and geochemistry of suspended sediments from groundwaters associated with undisturbed Zn-Pb massive sulfide sediments, Bathurst Mining Camp, New Brunswick, Canada. *Can. Min.* 39(6): 1597-1616.
- Lightfoot, P.c., Keays, R.R., and Doherty, W., 2001. Chemical Evolution and Origin of Nickel Sulfide Mineralization in the Sudbury Igneous Complex, Ontario, Canada. *EG* 96(8): 1855-1875.
- Macur, R.E., Wheeler, J.T., McDermott, T.R., and Inskeep, W.P., 2001. Microbial populations associated with the reduction and enhanced mobilization of arsenic in mine tailings. *Environ. Sci. Tech.* 35(18): 3676.
- Marrison, M.A. and Benoit, G., 2001. Filtration artifacts caused by overloading membrane filters. *Environmental Science and Technology*. 35: 3774-3779.
- Moroni, M., Girardi, V.A.A., and Ferrario, A., 2001. The Serra Pelada Au-PGE Deposit, Serra dos Carajas (Para State, Brazil): geological and geochemical indications for a composite mineralizing process. *Min. Deposita*. 36(8): 768-785.

continued on Page 14



RECENT PAPERS

continued from Page 13

- Nolan, R.P., et al. (eds.), 2001. The Health Effects of Chrysolite asbestos: Contributions of Science to Risk-Management Decisions. *Can. Mineralogist*. SP-5. 304 p.
- Obeid, M., Ali, M., and Mohamed, N., 2001. Geochemical exploration of the stream of Gabal El Mueilha Area, Central Eastern Desert, Egypt: an overview on the rare metals. *Resource Geology* 51(3): 217.
- Oyarzun, R., Marquez, A., Lillo, J., Lopez, I., and Rivera, S., 2001. Giant versus small porphyry copper deposits of Cenozoic age in northern Chile: adakitic versus normal Calc-Alkaline magmatism. *Min. Deposita*. 36(8): 794-798.
- Paulson, A.J., 2001. Biogeochemical removal of Zn and Cd in the Coeur D' Alene River (Idaho, USA), downstream of a mining District. *The Science of the Total Environment* 278(1-3): 31 -
- Piercey, S.J., Paradis, S., Murphy, D.C., and Mortensen, J.K., 2001. Geochemistry and Paleotectonic Setting of Felsic Volcanic Rocks in the Finlayson Lake Volcanic-Hosted Massive Sulfide District, Yukon, Canada. *EG* 96(8): 1877-1905.
- Polito, P.A., Bone, Y., Clarke, J.D.A., and Mernagh, T.P., 2001. Compositional zoning of fluid inclusions in the Archean Junction gold deposits, Western Australia: a process of fluid-wall-rock interaction? *Aust. J. Earth Sci.* 48(6): 833-855.
- Quevauviller, P., Rauret, G., Lopez-Sanchez, J-F., Rubio, R., We, A.M. and Musstau, H. 1997. Certification of total metal extractable contents in a sediment reference material (CRM 601) following a three-step sequential extraction procedure. *Science of the Total Environment*. 205: 223 -
- Reimann, C., Banks, D. and de Caritat, P., 2000. Impacts of airborne contamination on regional soil and water quality: Kola Peninsula, Russia. *Environmental Science and technology*. 34: 2727-2732.
- Renac, C., Kyser, T.K., Durocher, K., Dreaver, G., and O'Connor, T., 2002. Comparison of diagenetic fluids in the Proterozoic Thelon and Athabaska Basins, Canada: implications for protracted fluid histories in stable intracratonic basins. *Can. J. Earth Sci.* 39(1): 113-132.
- Rivard, B., Feng, J., Gallie, E.A., and Francis, H., 2001. Ore detection and grade estimation in the Sudbury mines using thermal infrared reflectance spectroscopy. *Geophysics* 66(6): 1691 -
- Semlali, R.M., Van Oort, F., Denaiz, L. and Loubet, M., 2001. Estimating distributions of endogenous and exogenous Pb in soils by using Pb isotopic ratios. *Environmental Science and Technology*. 35: 4180-4188.
- Sherlock, R. and Logan, M.A.V. (eds.), 2000. *VMS Deposits of Latin America Geol. Assoc. Can. Spec. Pub. No. 2.* 641 p.
- Singer, D.A. and Kouda, R., 2001. Some simple guides to finding useful information in exploration geochemical data. *Natural Resources Research* 10(2): 137 -
- Smith, C.G., 2001. Always the bridesmaid, never the bride: Cobalt Geology and Resources. *Trans IMM* 110: B75-80.
- Spence, K., 2002. An overview of valuation practices and the development of a Canadian code for the valuation of mineral properties. *C.I.M. Bull.* 95(1057): 77-80.
- Sussingham, R., 2001. Microbes show promise for bioremediating plutonium. *Environ. Sci. Tech.* 35(15): 314 -
- Tarras-Wahlberg, N.H., Flachier, A., Lane, S.N., and Sangfors O., 2001. Environmental impacts and metal exposure of aquatic ecosystems in rivers contaminated by small scale gold mining. The Puyango river basin, southern Ecuador. *The Science of the Total Environment* 278(1-3): 239 -
- Titley, S.R., 2001. Crustal Affinities of Metallogenesis in the American Southwest. *EG* 96(6): 1323-1342.
- Tonkin, J.W., Balistrieri, L.S. and Murray, J.W., 2002. Modeling metal removal onto natural particulates formed during mixing of acid rock drainage with ambient surface water. *Environmental Science and Technology*. 36: 484-492.
- Ulrich, T. and Heinrich, C.A., 2001. Geology and Alteration Geochemistry of the Porphyry Cu-Au Deposit at Bajo de la Alumbrera, Argentina. *EG* 96(8): 1719-1742.
- Valley, J.W. and Cole, D.R. (eds.), 2001. Stable Isotope Geochemistry. *Min. Assoc. Am. Rev. in Min. and Geochem.* V. 43. 662 p.: 124-132.
- Wang, D., Yang, J., Yan, S., Xu, J., Pu, G., and Luo Y., 2001. A special orogenic-type rare earth element

continued on page 18

New Members...

To All Voting Members:

Pursuant to Article Two of the Association's By-Law No.1, names of the following candidates, who have been recommended for membership by the Admissions Committee, are submitted for your consideration. If you have any comments, favorable or unfavorable, on any candidate, you should send them in writing to the Secretary within 60 days of this notice. If no objections are received by that date, these candidates will be declared elected to membership. Please address comments to David B. Smith, Secretary AEG, USGS, Box 25046, MS 973, Denver, CO 80225, USA.

Editors note: Council has decided that all new applicants will receive the journal and newsletter upon application for membership. The process of application to the Nepean office, recommendation by the Admissions Committee, review by the Council, and publication of applicant's names in the newsletter remains unchanged.

Geochemistry: Exploration, Environment, Analysis.

Please support your new Journal.

One thing GEEA cannot manage without is **TOP QUALITY SCIENTIFIC PAPERS**. This is your journal. You, the members of the Association, are showcasing our science. Let's make this a great journal by really making the effort to put pen to paper (or fingers to the keyboard) and get some real top-drawer new papers to the Editor. Instructions for authors are to be found on our web site (www.aeg.org).

So come on folks, get cracking, write up that study you did last year or even years ago. Someone out there would certainly benefit from your data and your conclusions! Especially us people out there in the Exploration Industry!

For too long we've been moaning about our industry being in the doldrums, let's get out and show we're scientists, not wimps!!

Put it on paper for GEEA today!

FELLOWS

Gray, David

Research Geochemist
CSIRO
Perth, WA, AUSTRALIA

Malik, Iftikhar

Deputy Chief Geologist
Pakistan Mineral Development Corp
Islamabad, PAKISTAN

MEMBERS

Greffie, Catherine

Geochemist
BRGM
Orleans, FRANCE

Kenyon, Keith

Chief Geochemist
Anglo Gold
Marshalltown, SOUTH AFRICA

Mu, Kong

Senior Geochemist,
Institute of Geochemical and Geophysical Exploration
Langfang, CHINA

Polito, Paul

Postdoctoral Fellow
Department of Geological Science, Queens University
Kingston, Ontario, CANADA

Stumpf, Andrew

Geologist
Illinois State Geological Survey
Illinois, USA



XRAL | Analytical Services

*Wherever in the world
your interests are...*

XRAL Laboratories

1885 Leslie Street
Toronto, ON M3B 3J4
Tel: (416) 445-5755
in the USA:

1 (800) 387-0255

Fax: (416) 445-4152

Les Laboratoires XRAL

129, av. Réal Caouette
Rouyn-Noranda, PQ
J9X 5A9

Tel: (819) 764-9108

Fax: (819) 764-4673

SGS del Peru S.A.

Av. Elmer Faucett 3348
Callao 1 - Lima, Peru
Tel: (51-14) 840855
Fax: (51-15) 741600

SGS-XRAL Laboratories

Km 2.5 Carretera
Internacional
Salida a Nogales
Hermosillo, Mexico
Tel: (52-62) 106535
Fax: (52-62) 100350

Sample preparation: Flin Flon (Manitoba), Saint John (N.B.), Red Lake, (ONT), Grand Falls, (NFLD), Tumeramo (Venezuela), and Ulaanbaatar (Mongolia).

Laboratories:

Ecuador, Bolivia, Brazil, Chile, Ghana, Zimbabwe, Kazakhstan, Europe and elsewhere.



**SGS maintains 1,100 offices
in 140 countries.**

Member of the SGS Group (Société Générale de Surveillance)

for Geologists



21st IGES

DUBLIN, 2003

29th August to 3rd September, 2003

Preliminary Announcement

- **Technical Sessions**
- **Workshops**
- **Posters and Trade Exhibition**
- **Field Visits**
- **Social Programme**
- **Accompanying Persons Programme**

For additional information please see the AEG Website: <http://www.aeg.org>

Contact

If you have any questions, suggestions for the Symposium or would like to offer assistance to the Local Organising Committee please contact:

The Secretary LOC - Eibhlin Doyle (e-mail eibhlindoyle@gsi.ie)

The LOC comprises representatives from: the Geological Survey of Ireland; the Geological Survey of Northern Ireland; the Exploration and Mining Division of the Department of the Marine and Natural Resources; the Environmental Protection Agency; the Irish Association for Economic Geology; and the Institution of Mining and Metallurgy.



THE ASSOCIATION OF EXPLORATION GEOCHEMISTS

APPLICATION FOR NON-VOTING MEMBERSHIP*

Please complete the section relevant to the class of membership sought and supply your address on this form.
Mail the completed application, together with annual dues, to the address below.

***Details of requirements and application forms for voting membership (fellowship) can be obtained from the AEG website (<http://www.aeg.org>) or business office.**

MEMBER

I _____ wish to apply for election as a Member of the Association of Exploration Geochemists. I am presently employed by:

_____ as a _____.

(employer) (employment title)

I am actively engaged in scientific or technological work related to geochemical exploration and have been so for the past two years. Upon receipt of the Code of Ethics of the Association I will read them and, in the event of being elected a Member, agree to honour and abide by them. Witness my hand this _____ day of _____ 20 _____.

(Signature of applicant)

STUDENT MEMBER

I _____ wish to apply for election as a Student Member of the Association of Exploration Geochemists. I am presently engaged as a full-time student at _____, where I am taking a course in pure or applied science. Upon receipt of the Code of Ethics of the Association and in the event of being elected a Student Member agree to honour and abide by them. Witness my hand this _____ day of _____ 20 _____.

(Signature of applicant)

Student status must be verified by a Professor of your institution or a Fellow of the Association of Exploration Geochemists. I certify that the applicant is a full-time student at this institution.

(Signature)

(Printed Name and Title)

NAME AND ADDRESS

(to be completed by all applicants)

Name: _____
Address: _____

Telephone: _____
bus: _____
fax: _____
home: _____
email: _____

Annual Dues

All applications must be accompanied by annual dues. Select one or two below:

1	2002 member dues	US\$	70	_____
2	2002 student member dues		40	_____
	If you require a receipt, include a self-addressed envelope and add		2	_____
	If your check is not drawn from a U.S.A. or Canadian bank, add		15	_____
			TOTAL	_____

All payments must be in US funds. Payment by check, International Money Order, UNESCO Coupons, International Postal Orders, VISA and Master Card are acceptable. For users of VISA or Master Card, minor variations in your billing may reflect currency exchange rate fluctuations at time of bank transaction.

If you pay by charge card, please provide the following information: type: Master Card _____ VISA _____

Credit card account number: _____ Expiration date: _____.

Name: _____ Signature: _____

Please note: Your completed form should be mailed to the Business Office of the Association and will be acknowledged upon receipt. The Admissions Committee reviews all applications and submits recommendations to Council, who will review these recommendations at the next Council Meeting or by correspondence. If no objection is raised the names, addresses and positions of candidates will be listed in the next issue of the Association Newsletter. If after a minimum of 60 days have elapsed following submission of candidate information to the membership no signed letters objecting to candidates admission are received by the Secretary of the Association from any Member, the Candidate shall be deemed elected, subject to the receipt by the Association of payment of required dues. Send completed application, together with annual dues to:

EXPLORE



RECENT PAPERS

continued from Page 14

Newsletter No. 115

APRIL 2002

Editors: Lloyd James (303) 741-5199 (Phone and Fax)
(l-james@ecentral.com)

Mary E. Doherty (303) 278-6876 Fax: 303-215-0641
MaryEDoherty@earthlink.net

Associate Editor:

Sherman P. Marsh (303) 986-0939 (smarsh@earthlink.net)

Assistant Editors:

Elizabeth Bailey (ebailey@usgs.gov)

Robert Eppinger (eppinger@usgs.gov)

David Gray (d.gray@per.dem.csiro.au)

Patrick Highsmith (phighsmith@alschemex.com)

Geoff Murphy (gckmurphy@acenet.net.au)

David Turner (dturner@swri.edu)

Marian Skwarnecki (Marian.Skwarnecki@adl.clw.csiro.au)

Business Manager:

David Kelley (303) 268-8318 (dave.kelley@wmc.com)

EXPLORE is published quarterly by the Association of Exploration Geochemists, P.O. Box 150991, Lakewood, CO 80215-0991, USA.

EXPLORE is a trademark of the Association of Exploration Geochemists.

Type and layout of EXPLORE: Vivian Heggie, Heggie Enterprises, Thornton, CO (303) 288-6540; <vjmhggie@starband.net>

ADVERTISING RATES

Full page (Black & White)	241h x 190w mm	(9.5h x 7.5w in)	US \$ 970
Full page (Color)			US\$1165
Half page (Black & White)	241h x 89w mm	(9.5h x 3.5w in)	US \$ 530
or	124h x 190w mm	(4-7/8h x 7.5w in)	
Half page (Color)			US \$635
Third page (Black & White)	241h x 51w mm	(9.5h x 2w in)	US \$420
or	178h x 89w mm	(7h x 3.5w in)	
Third page (Color)			US \$505
Quarter page (B&W)	124h x 89w mm	(4-7/8h x 3.5w in)	US \$300
or	241h x 41w mm	(9.5h x 1-5/8w in)	
Quarter page (Color)			US \$360
Eighth page (Black & White)		60h x 89w mm(2-3/8h x 3.5w in)	US \$190
Eighth page (Color)			US \$230
Business Card (B&W)	51h x 89w mm	(2h x 3.5w in)	US \$ 50
Business Card (Color)			US \$ 60

Please direct advertising inquiries to:

DAVID KELLEY, WESTERN MINING CORP. (USA)
8008 EAST ARAPAHOE COURT • ENGLEWOOD, CO 80112 • USA
(303) 268-8318 Fax: (303) 268-8370 (dave.kelley@wmc.com)

LIST OF ADVERTISERS

Acme Analytical Laboratories, Ltd.	11
Activation Laboratories Ltd.	2
ALS/Chemex	9
Becquerel Laboratories, Inc.-Australia	12
Becquerel Laboratories, Inc.-Canada	6
CSM Continuing Study	7
Geosoft	2
International Geochemical Consultants - Mary Doherty	12
Jeff Jaacks	10
MEG Shea Clark Smith	8
Rocklabs	10
Rockware Geochemist's Workbench	20
XRAL - X-Ray Assay Labs	15

deposit in Moniuping, Sichuan, China: Geology and Geochemistry. Resource Geology 51(3): 177 –

Weng, L. Teminghoff, E.J.M. and Van Riemsdijk, W.H., 2001. Contribution of individual sorbents to the control of heavy metal activity in sandy soil. Environmental Science and Technology. 35: 4436-4443.

Wilkin, R.T., McNeil, M.S., Adiar, C.J., and Wilson, J.T., 2001. Field measurement of dissolved oxygen: A comparison of methods. Groundwater Monitoring and Remediation. ?

Zakharov, M.N. and Kravtsova, R.G., 2001. Geochemistry of rocks from volcanic-plutonic associations of the Karamken gold-silver deposit, Russian Northeast. Geochem. Intern. 39(9): 848-856.

Zhong, Q., Shao, S., Pan, J. and Liu, Z., 2001. Halogen elements as indicators of deep-seated orebodies in the Chadong As-Ag-Au deposits; westwern Guangdong, China. Ore Geol. Rev. 18(3/4): 169-180.



Correction...

“Geosoft acquisition....” Explore, Number 114, page 3 PLEASE NOTE:

The article entitled “*Geosoft Inc (Toronto, Canada), Metech Pty Ltd (Perth, Western Australia) Sign Coop Agreement*” was incorrectly referred to as “*Geosoft acquisition...*” when the article was continued to another page of the last issue of Explore.

The Geosoft and Metech Pty Ltd. partnership is a cooperative agreement whereby Geosoft will be providing full sales and support services for the acQuire line of data management solutions.

For information on the agreement or to attend an Oasis montaj/acQuire workshop go to www.geosoft.com



Deadlines for the Next Four Issues of EXPLORE

Contributors's deadlines for the next four issues of **EXPLORE** are as follows:

Issue	Publication date	Contributor's Deadline
116	July 2002	May 31, 2002
117	October 2002	August 31, 2002
118	January 2003	November 30, 2002
119	April 2003	February 28, 2003

THE ASSOCIATION OF EXPLORATION GEOCHEMISTS

P.O. Box 26099, 72 Robertson Road, Nepean, Ontario K2H 9R0 CANADA
Telephone (613) 828-0199

OFFICERS

January - December 2002

Philippe Freyssinet, President
BRGM
BP6009
Orleans, France 45060
TEL: +33 238 64 3005
FAX: +33 238 64 3652
email: p.freyssinet@brgm.fr

Stephen D. Amor, Vice President
1235 Fairview Street, Suite 353
Burlington, Ontario
Canada L7S 2K9
TEL: +1 905 308 9514
FAX: +1 905 308 9414
email: SteveAmor@compuserve.com

David B. Smith, Secretary
U.S. Geological Survey
Box 25046, MS 973
Denver, CO 80225
USA
TEL: (303) 236-1849
FAX: (303) 236-3200
email: dsmith@helios.cr.usgs.gov

Gwendy E.M. Hall, Treasurer
Geological Survey of Canada
601 Booth Street, Room 702
Ottawa, ON K1A 0E8
CANADA
TEL: (613) 992-6425
FAX: (613) 996-3726
email: ghall@gsc.nrcan.gc.ca

COUNCILLORS

Councilor Emeritus
Sherman Marsh

2001-2002
Paul Taufen (*ex-officio*)
Robert J. Bowell
Mary E. Doherty
Dave Kelley
Christopher Oates
Cliff Stanley

2002-2004
Nigel Radford (*ex officio*)
Chris Benn
Richard Carver
David Garnett
Robert Jackson

Australia
Leigh Bettenay
Nigel Brand
Mark Elliott
Brazil
Germano Melo Jr.
Chile
Alvaro Puig
China
Xueqiu Wang

Europe
J. B. De Smeth
Northern Countries
Vacant
Southeast Asia
Tawsaporn Nuchangong
Southern Africa
Charles Okujeni
UK and Republic of Ireland
Deirdre M. A. Flight

COMMITTEES

Australian Geoscience Council Representative

Graham Taylor

Canadian Geoscience Council Representative

W. K. Fletcher

Awards and Medals Committee

Eric Weiland, *Chair*
John S. Cone
Robert G. Garrett
Günter Matheis
Barry W. Smee

Bibliography Committee

L. Graham Closs, *Chair*
Robert G. Garrett
Richard K. Glanzman
Eric C. Grunsky
Peter J. Rogers

Distinguished Lecturer Committee

David Garnett, *Chair*

Election Official

Sherman Marsh

EXPLORE

Lloyd James, Editor
Sherman P. Marsh, Assoc. Editor
David Kelley, *Business Manager*

**Geochemistry: Exploration,
Environment, Analysis**
Gwendy E.M. Hall, *Editor-in-Chief*

Admissions Committee

Nigel Radford, *Chair*

New Membership Committee

Shea Clark Smith, *Chair*
Mark S. Elliot
Germano Melo, Jr.

Publicity Committee

M. Beth McClenaghan, *Chair*
Sherman P. Marsh
J. Stevens Zuker
R. Steve Friberg

Regional Councillor Coordinator

Philippe Freyssinet

Short Course Committee

Colin E. Dunn, *Co-Chair*
Vlad Sopuck, *Co-Chair*

Student Paper Competition Committee

Ian Robertson, *Chair*
J.B. de Smeth
Richard Davy
Owen Lavin

Symposium Committee

Steve Amor, *Chair*
Eion Cameron
Mario Desilets
Philippe Freyssinet
Gwendy Hall
Virginia McLemore
Barry W. Smee
Graham F. Taylor

Web Site Committee

Steve Amor, *Chair*
Richard Carver

Betty Arseneault, Business Manager

P.O. Box 26099, 72 Robertson Road, Nepean, ON K2H 9R0 CANADA, TEL: (613) 828-0199 FAX: (613) 828-9288, e-mail: aeg@synapse.net

Steve Amor, Webmaster

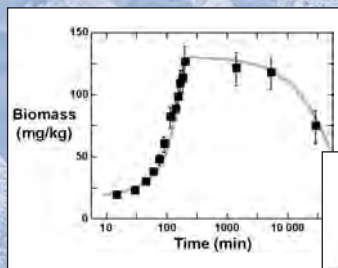
e-mail: SteveAmor@compuserve.com

The Geochemist's Workbench[®]

H₂O • Ag⁺⁺⁺ • Am⁺⁺⁺ • As(OH)₄⁻ • Au⁺ • B(OH)₃ • Ba⁺⁺ • Br⁻ • Ca⁺⁺ • HCO₃⁻ • Cs⁺ • Cl⁻ • Co⁺⁺ • Cr⁺⁺⁺ • Cu⁺ • Eu⁺⁺⁺ • F⁻

We put *BUGS* in our software!

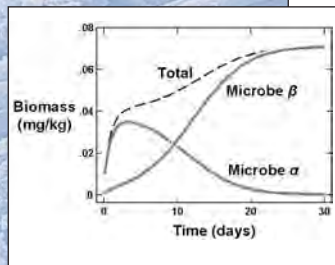
Growth and decay of microbial biomass in a laboratory experiment



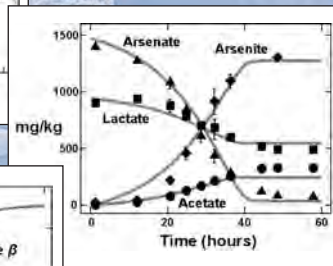
New! Version 3.2

Windows 98/ME and
Windows NT/2000/XP

Growth on acetate in a chemostat experiment of two strains of microbes, one fast, the other efficient



Arsenate reduction by
BACILLUS ARSENICOSELENATIS



New in 3.2 —

- MICROBIAL METABOLISM AND GROWTH Model the geochemical and mineralogic effects of complex microbial communities
- CUSTOM RATE LAWS Specify kinetic rate laws of any form — No Programming needed!

GWB is your personal toolkit for —

- Reaction simulation
- Kinetics
- Surface chemistry
- Isotope fractionation
- "Pitzer equations"
- Speciation
- Bioavailability
- Redox disequilibrium
- Redox-pH diagrams
- Catalysis, enzymes, and more!

Price —

\$2,900.00 (\$1,600.00 academic)

Industry • Government • Consulting
Academic • Classroom

The Geochemist's Workbench[®] is a registered trademark of the University of Illinois.

GWB Short Course!

October 30–31, 2002
Denver, Colorado
(with annual GSA Meeting)

Photo: B. Fouke



RockWare[®]
Earth Science Software

Over 200 Software Solutions at <http://www.rockware.com>

2221 East Street, Suite 101, Golden, CO 80401 • 800.775.6745, 303.278.3534, fax: 303.278.4099

Paid Advertisement

EXPLORE

Newsletter for The Association of Exploration Geochemists

P.O. Box 150991, Lakewood, CO, 80215-0991, USA

Please send changes of address to:
Association of Exploration Geochemists

P.O. Box 26099, 72 Robertson Road, Nepean, Ontario, K2H 9R0, Canada • TEL: (613) 828-0199 FAX: (613) 828-9288
e-mail: aeg@synapse.net • <http://www.aeg.org/aeg/aeghome.htm>

PR SRT STD.
U.S. POSTAGE
PAID
DENVER, CO
PERMIT NO. 3550