

**Introduced particles in indicator mineral processing:  
a) considerations in preparing test samples for QA/QC;  
and b) examples of anthropogenic contamination**

**Michael Michaud & Stuart Averill**

**Overburden Drilling Management Limited  
Ottawa, Ontario**

**International Applied Geochemistry Symposium  
Workshop B: Indicator Mineral Exploration Technology**



# U.N.B.



Dr. H. W. van de Bilt  
CHAIRMAN

# Class of 1994

# Bachelor of Science Geology



Denise Long



Michelle Luscombe



Gavin Atcock



Michael Michaud



Brian Corbett

The Harvey Studios



# Introduced particles in indicator mineral processing: a) considerations in preparing test samples for QA/QC; and b) examples of anthropogenic contamination

## Part 1

- Grain species used for spiking
- Mineral properties: density, size and shape
- Laser etched grains and synthetic tracers
- Base sample selection

## Part 2

- Mine contamination of stream sediments
- Nuisance contamination of streams
- Airfall contamination of humus and till
- Ending with a 'bang'



# Part 1

“Considerations in preparing test samples for QA/QC”



# Mineral Properties that Affect Recovery

1. Density

2. Size

3. Shape



*Photo: Mineral Services Canada*



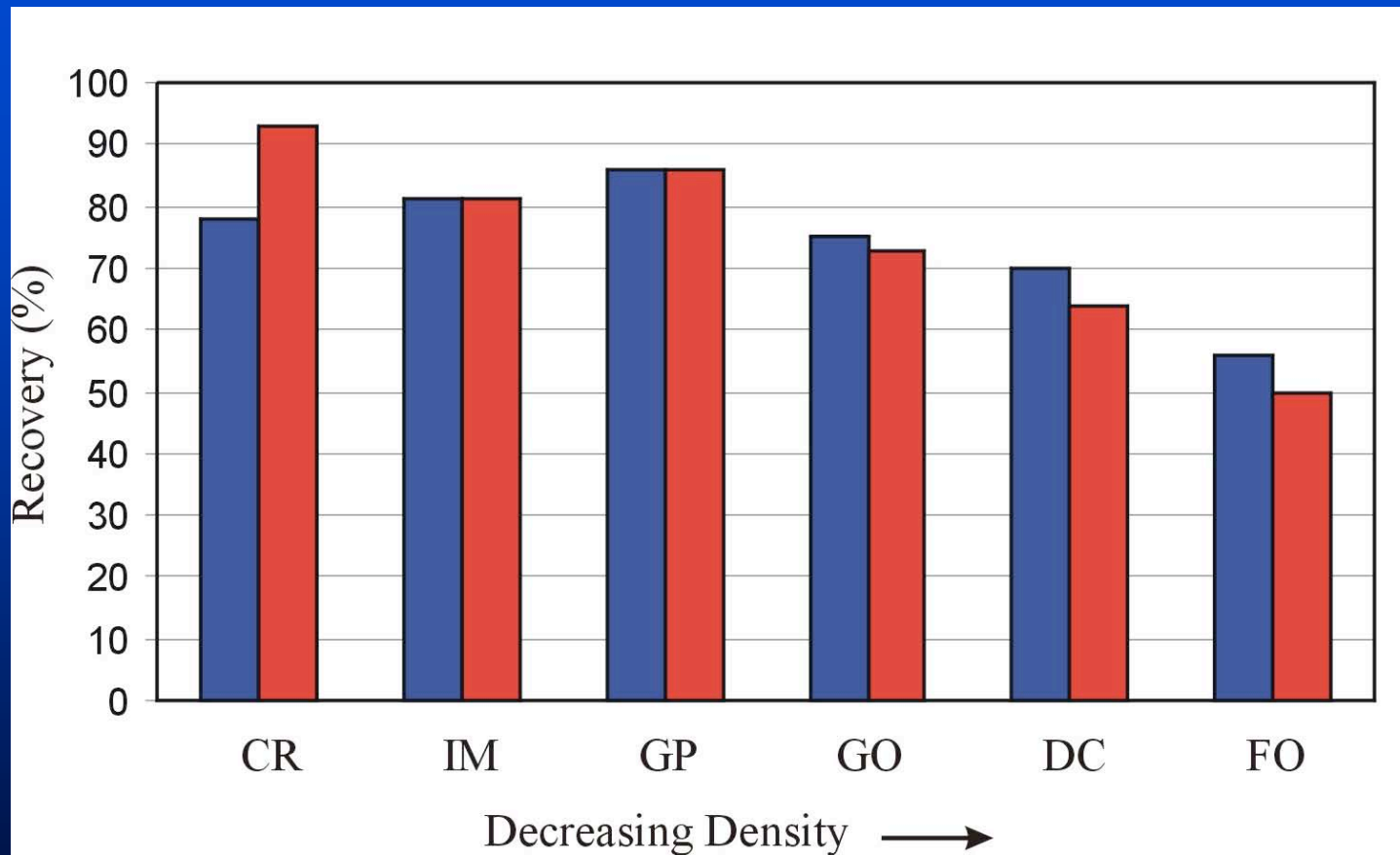
*Photo: M. Lehtonen*



*Photo: P. Sarala*



# Recovery versus Density



<u>Mineral</u>	<u>Symbol</u>	<u>Specific Gravity</u>
Forsterite	FO	3.25
Cr-diopside	DC	3.3
Cr-poor pyrope	GO	3.7
Cr-pyrope	GP	3.8
Mg-ilmenite	IM	4.7
Chromite	CR	5.1

<u>Mineral</u>	<u>Symbol</u>	<u>Specific Gravity</u>
Forsterite	FO	3.25
<b>Cr-diopside</b>	<b>DC</b>	<b>3.3</b> ←
Cr-poor pyrope	GO	3.7
<b>Cr-pyrope</b>	<b>GP</b>	<b>3.8</b> ←
Mg-ilmenite	IM	4.7
<b>Chromite</b>	<b>CR</b>	<b>5.1</b> ←

# Why Size of Spike Grains Matters

- Stokes' Law
- Most KIMs occur naturally between 0.25-2.0 mm
- There is no perfect gravity concentrating device

# KIMs from 0.25-0.5 and 0.5-1.0 mm Fractions



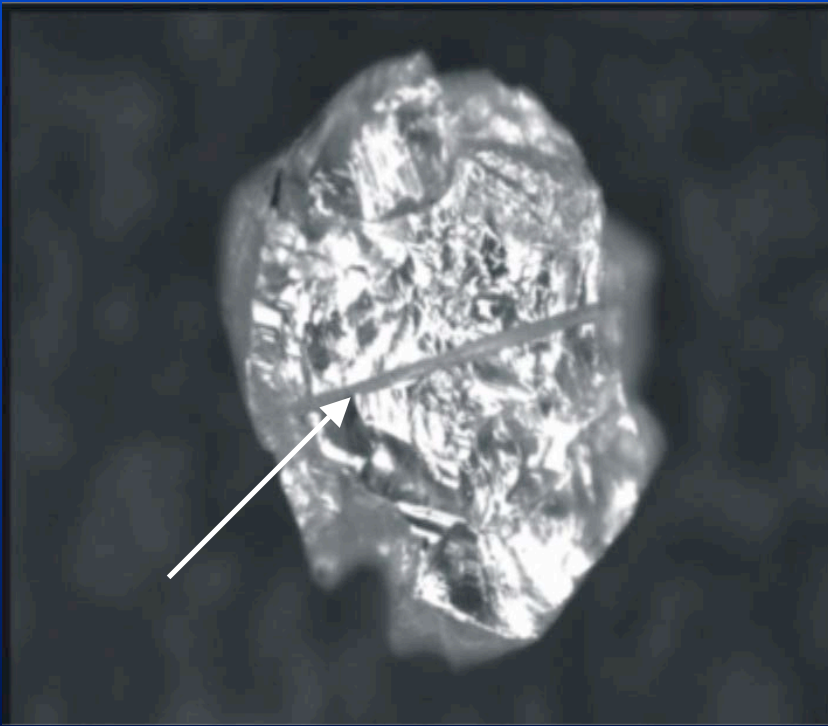
# Other Considerations for Spike Grain Selection

- Use only unequivocal KIMs that have been naturally transported
- Include both typical and atypical specimens
- Avoid structurally weak grains
- Avoid grains with dimensions close to upper and lower boundaries
- Avoid slightly magnetic grains (Mg-ilmenite) to prevent premature removal

# Structurally Weak Cr-Diopside



# Laser Etching



*Photos: Sean Whiteford*

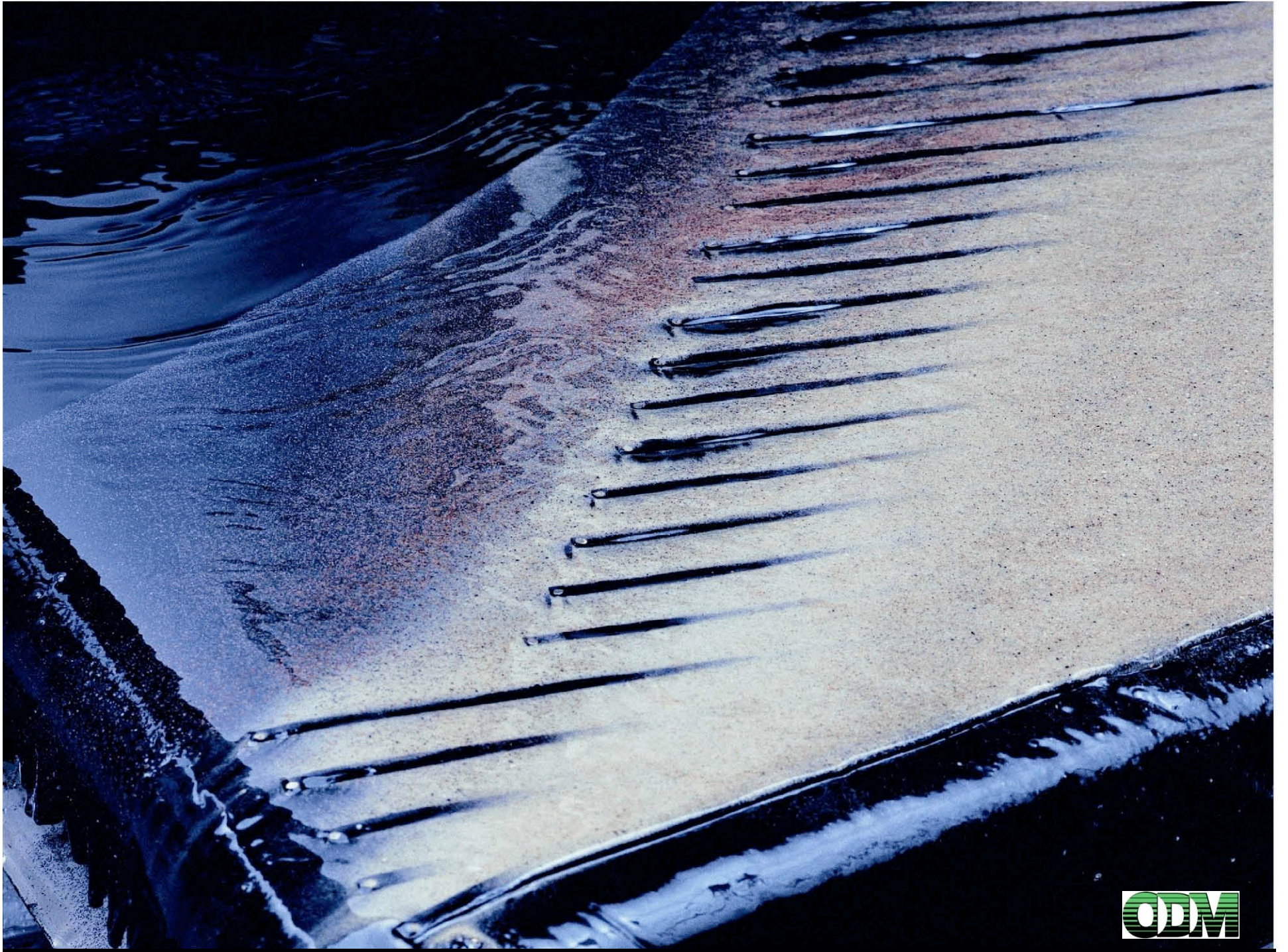
# Synthetic Density Tracers

- Different shape than KIMs
- If magnetic, removed by ferromagnetic separation
- If non-magnetic, contain Pb but variably paramagnetic
- Reshaped/resorbed by solvents such as acetone



## Acceptable Base Samples

- Only natural sample material should be used
- Weight and mineralogy of the HMC matches that of the host project
- HMC is essentially KIM and pseudoKIM free
- Previously processed samples are ideal if all fractions are available to be re-combined





# “Considerations in preparing test samples for QA/QC”

## Spiked Grains

- Test range of densities
- Test range of sizes
- Laser etched grains are useful but expensive and possibly weakened
- Synthetic tracers should avoided

## Sample Base

- Natural till or sand and gravel
- Quartz-sand bases enhance recovery
- Previously processed, KIM-free samples are ideal

## Part 2

**“Examples of anthropogenic contamination”**

## Sources of Contamination to Indicator Mineral Sampling

- Mining related infrastructure and operations (tailings, waste dumps, smelters)
- roads
- railways
- bridges

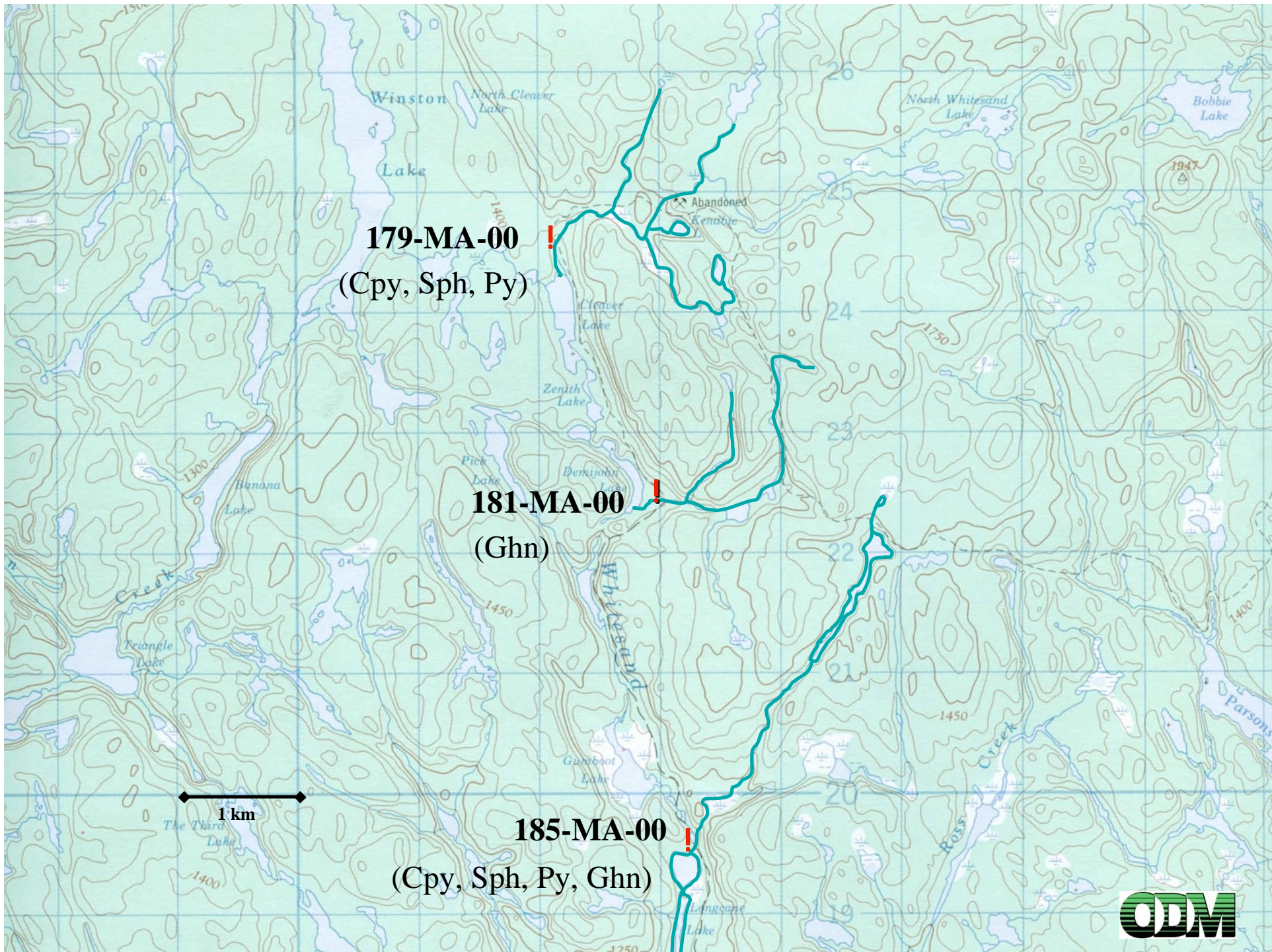


Schreiber

Ottawa

Toronto





# VMS Indicator Mineral Contamination

**Chalcopyrite**



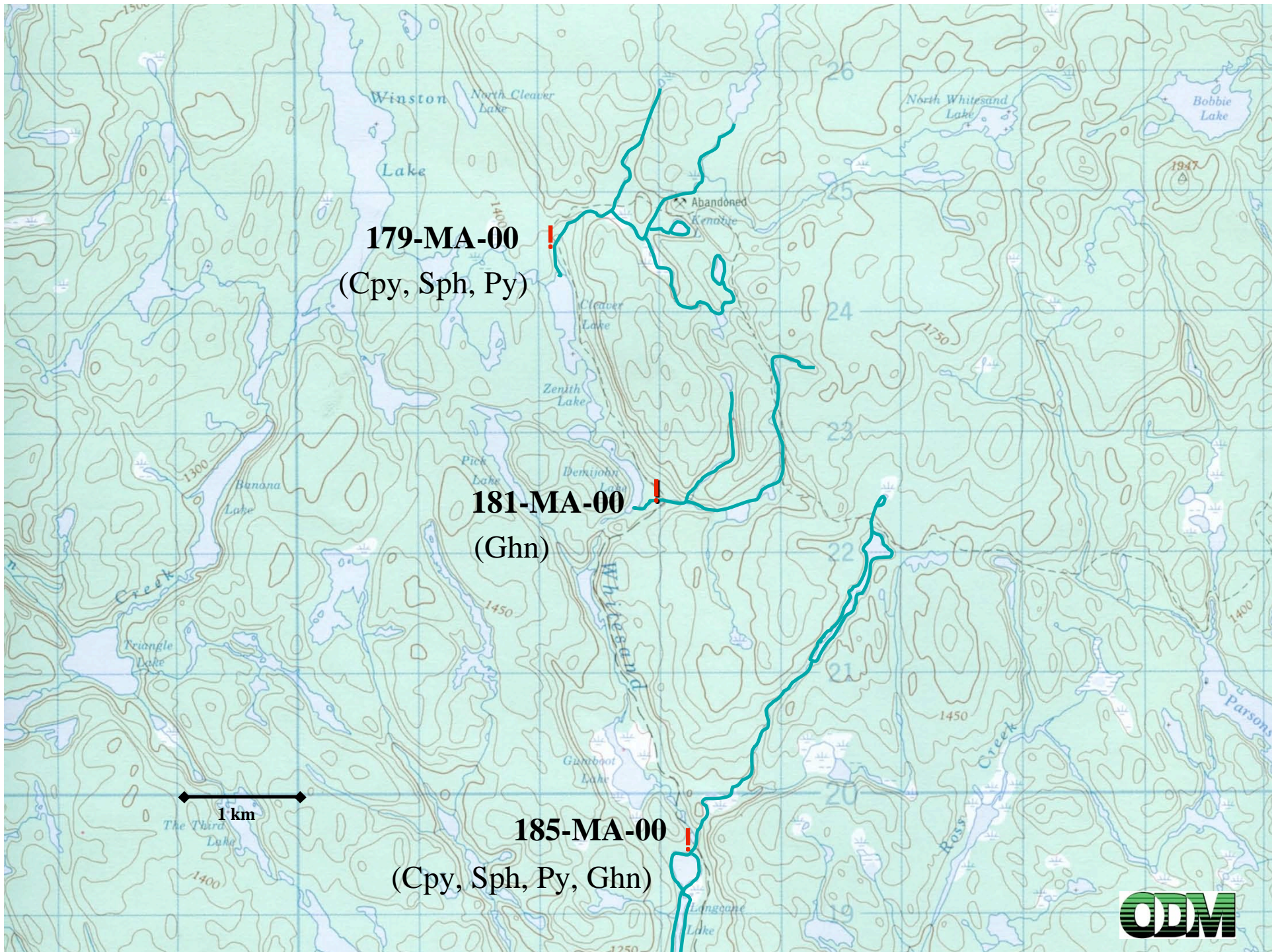
**Pyrite**

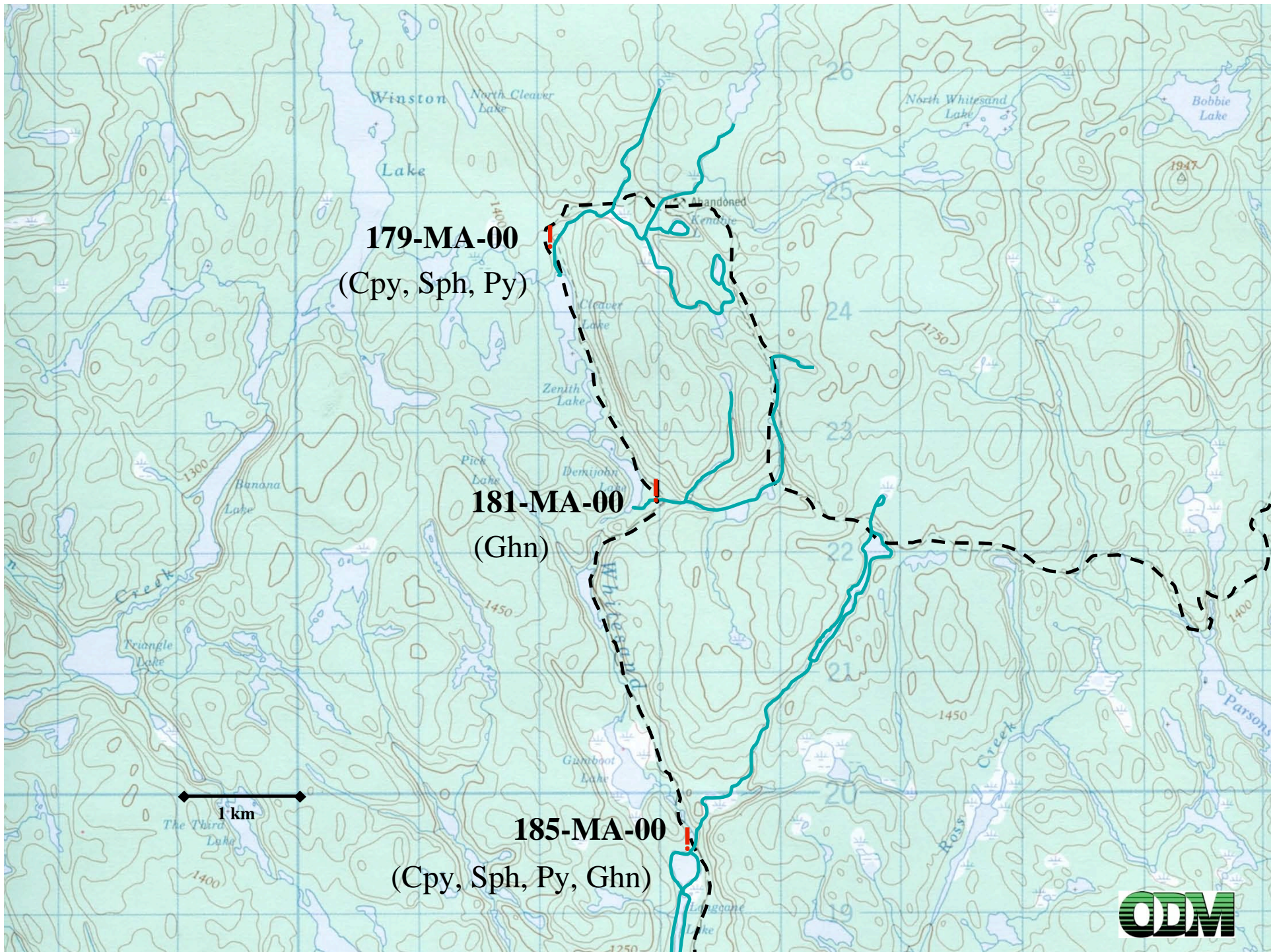


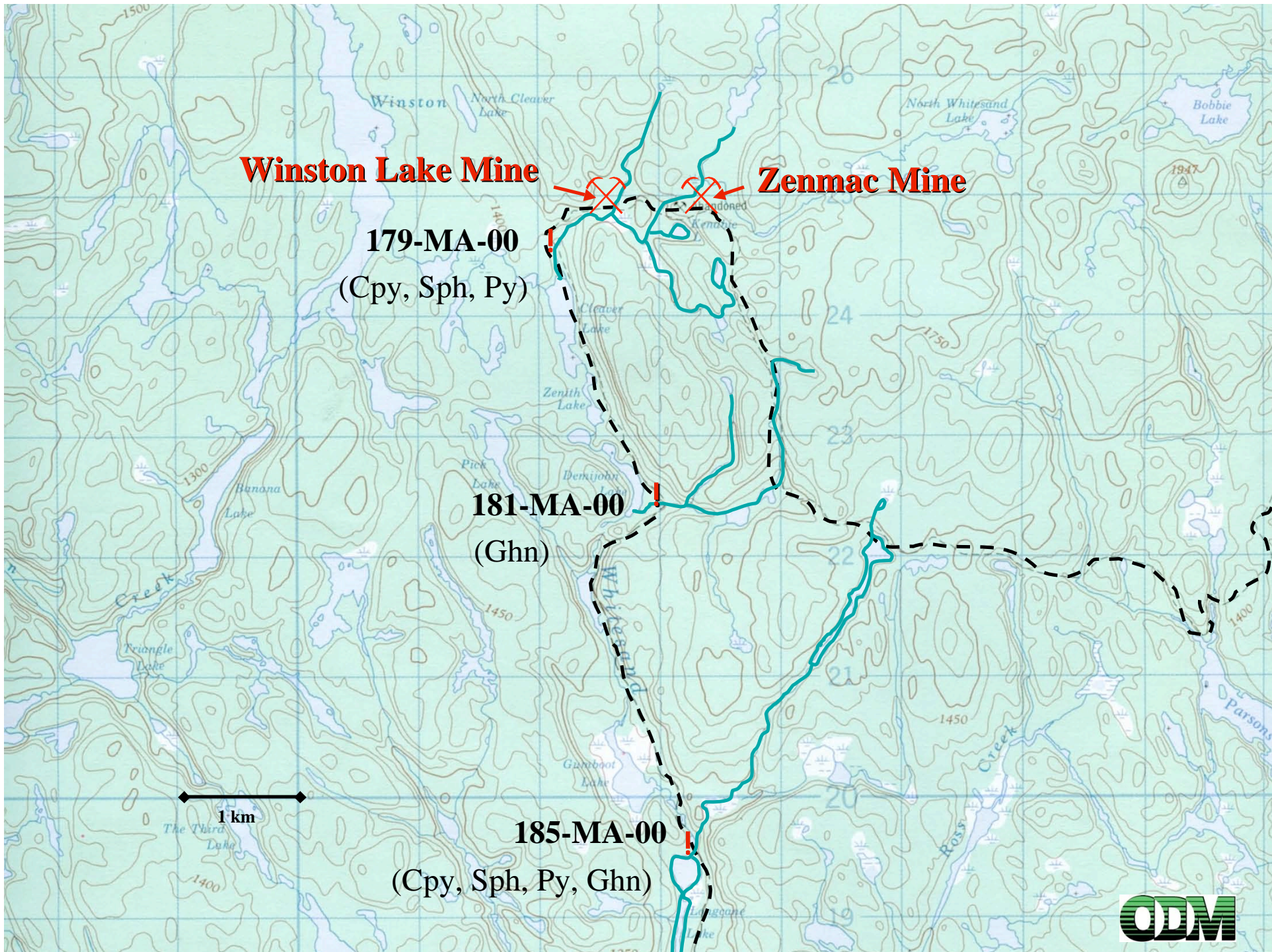
**Gahnite**



0.5 mm







**Winston Lake Mine**

**Zenmac Mine**

**179-MA-00**  
(Cpy, Sph, Py)

**181-MA-00**  
(Ghn)

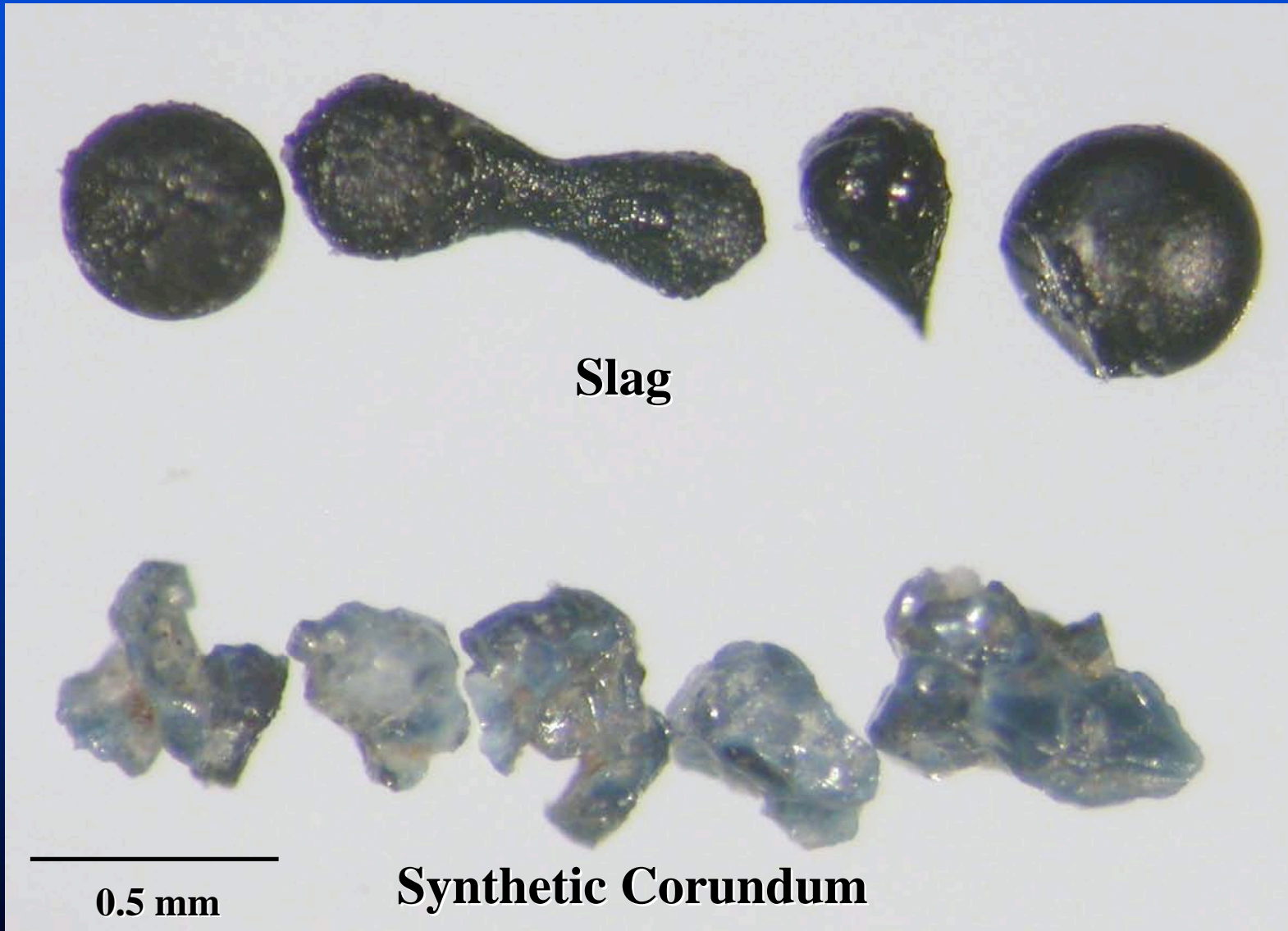
**185-MA-00**  
(Cpy, Sph, Py, Ghn)

1 km





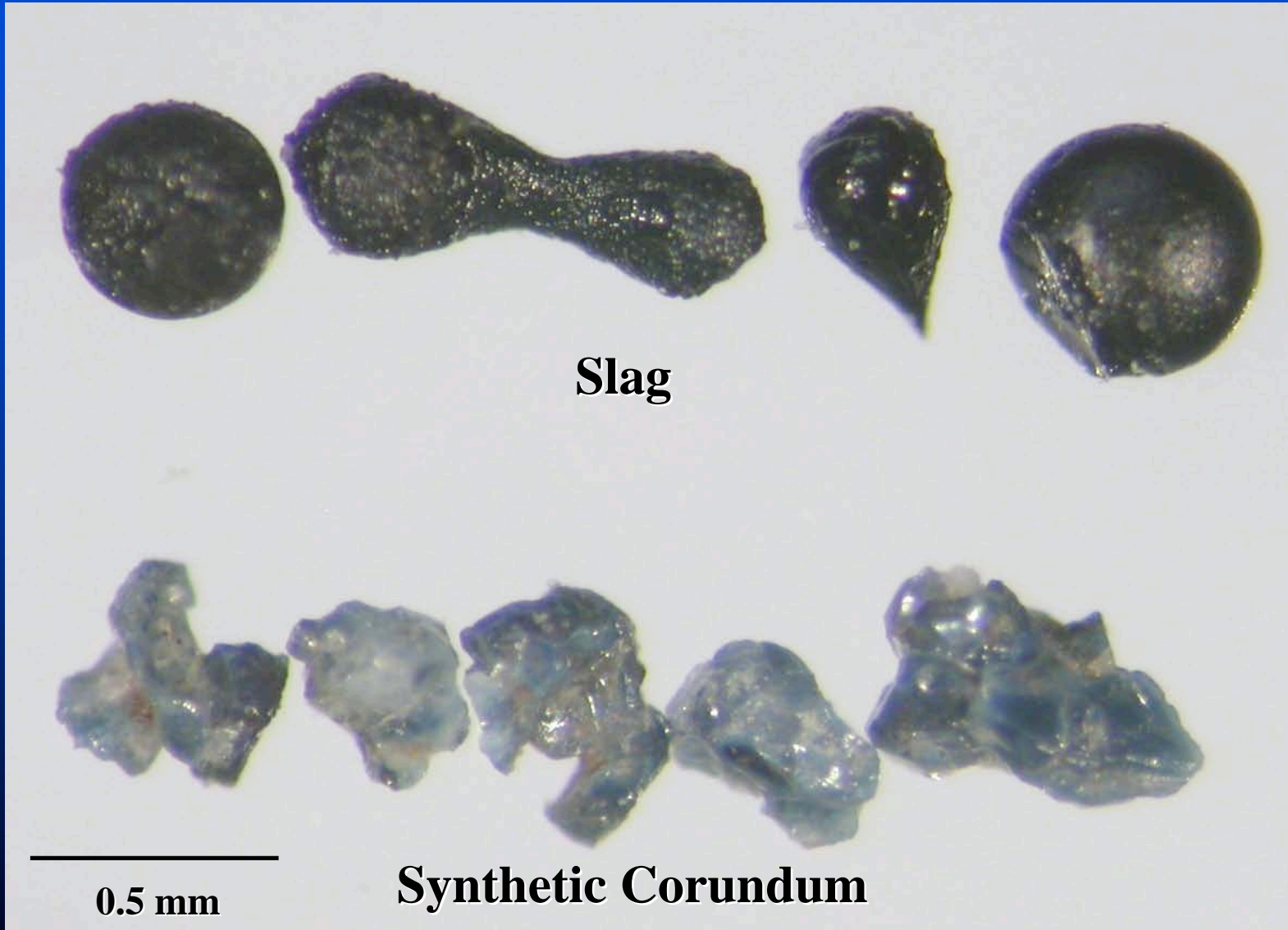
# Examples of Contamination in Ontario Alluvial Sediment Samples



# Ontario Railway Bridge – Contamination Source



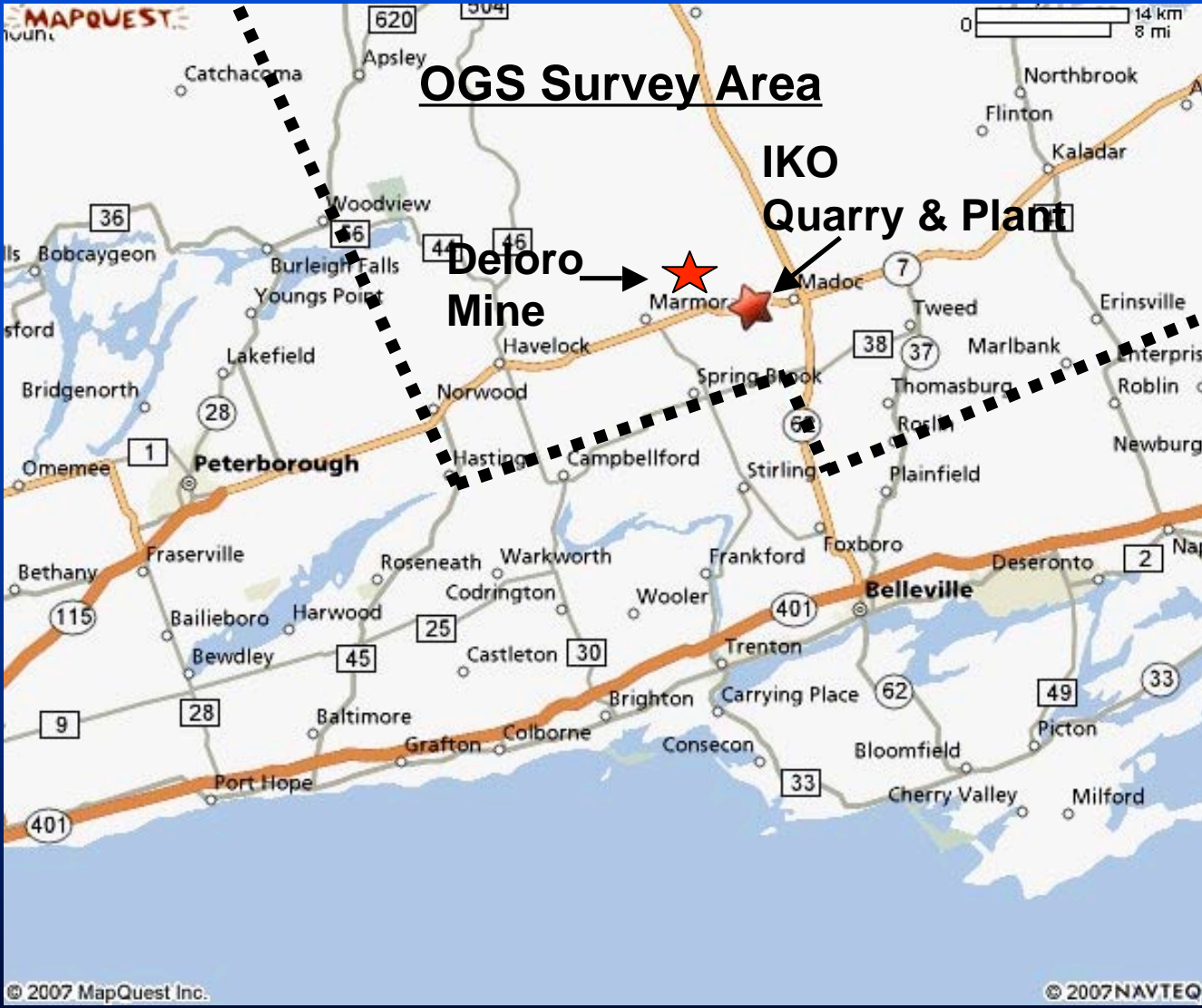
# Examples of Contamination in Ontario Alluvial Sediment Samples



# Paint and Ceramic Coated Shingle Granules



# Contamination Sources in OGS Survey Area



Lac des Iles

Kirkland Lake

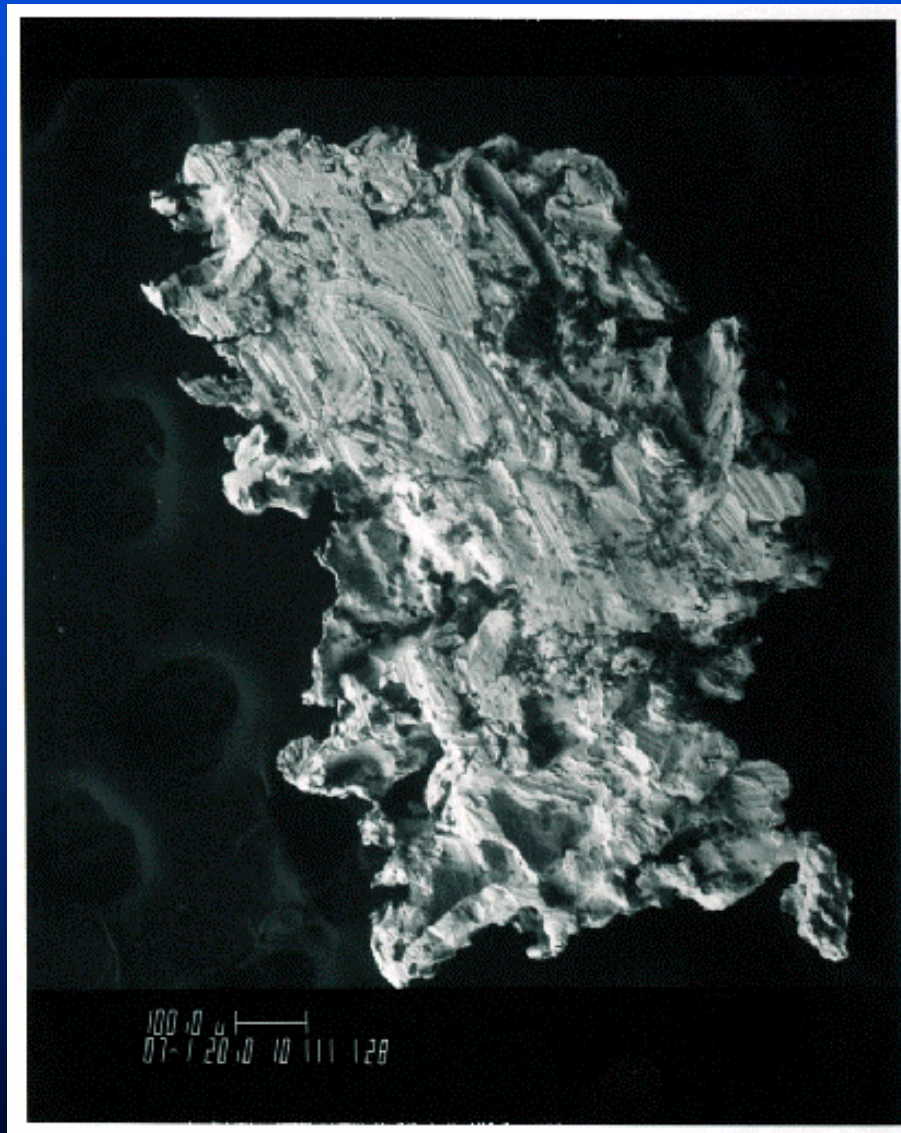
Ottawa

Toronto

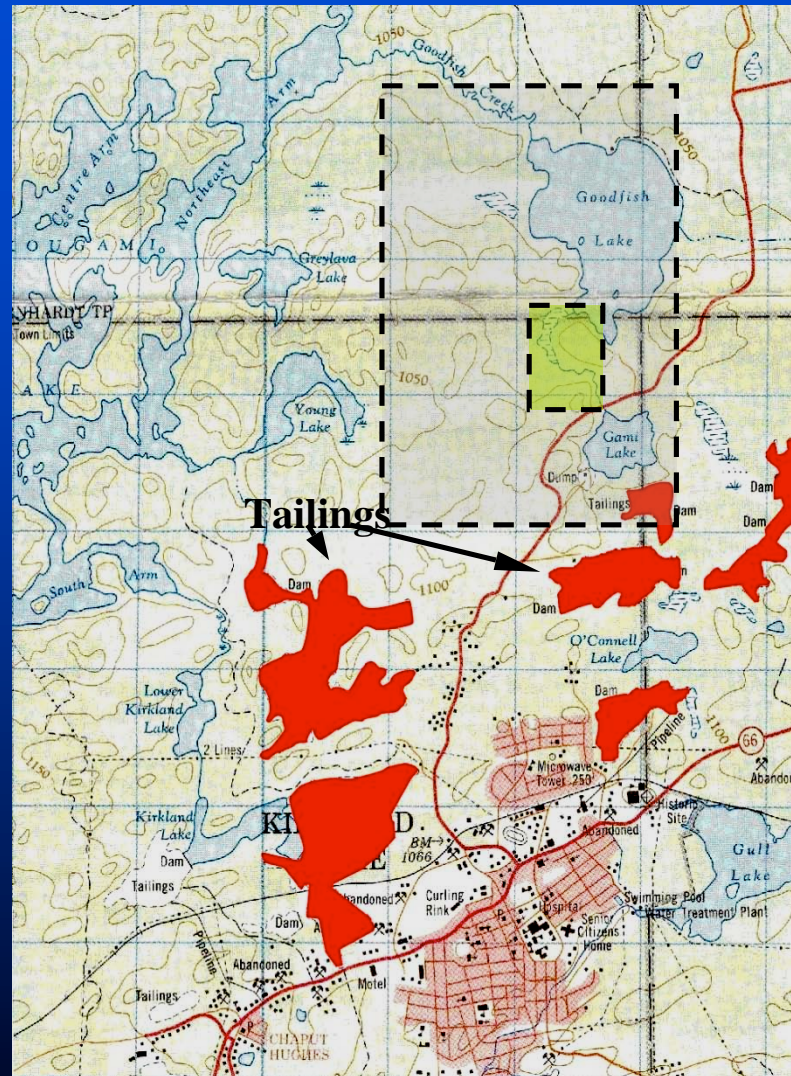




# Mechanically Modified Gold Grain



# Location of Gold-in-Humus Anomaly and Proximal Tailings Ponds, Kirkland Lake, Ontario



# Dust Cloud from Lac des Iles Pd Mine



Photo: OGS.



# Smelter, Thompson, Manitoba



Photo: B. McClenaghan



# Slag from Thompson Manitoba



Photo: B. McClenaghan



# Bullet Recovered from Minnesota Till Sample



0.5 cm